

DRAFT 5/19/2009

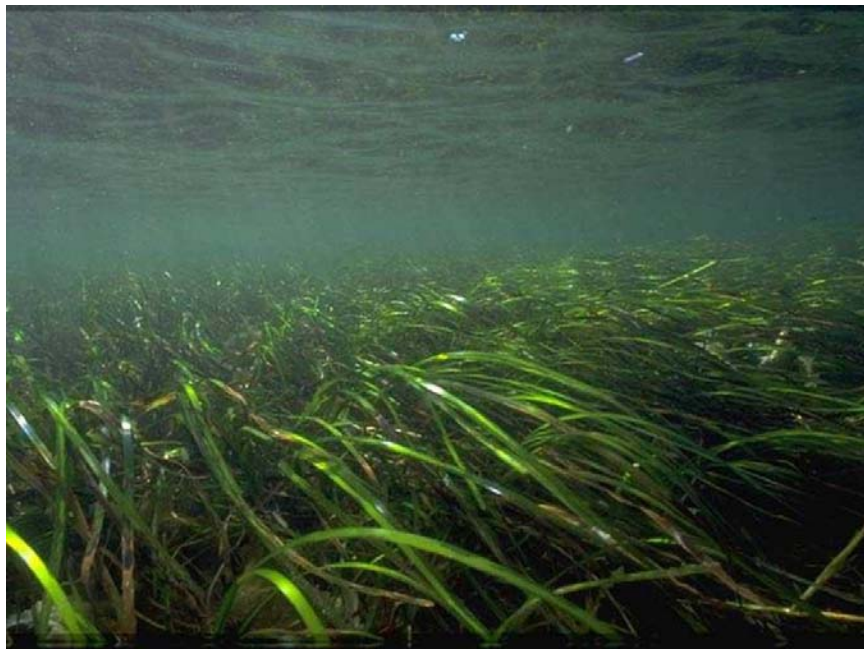
Inventory of SAV Maps and Survey Work in Coastal North Carolina (1981-2008)

by

**N.C. Division of Marine Fisheries – Habitat Protection Section
Morehead City, NC 28557**

for

**Albemarle-Pamlico National Estuary Program Submerged
Aquatic Vegetation (SAV) Mapping Partnership**



Report Year: 2008

SAV Mapping Inventory (1981-2008)

Preface

This documents depicts the general location of both submerged aquatic vegetation (SAV) mapping efforts and extensive survey work. While mapping efforts provide spatially referenced data on individual beds of SAV, survey work may include only a description of SAV present within selected water bodies. As such, possible locations for change analysis should be determined with attention to method used. The method used is listed after each citation in the, "List of Map Labels," on the next page. Contact Scott Chappell by direct line at (252) 808-8071 (direct line) or by email at <mailto:Scott.Chappell@ncdenr.gov> with specific questions.

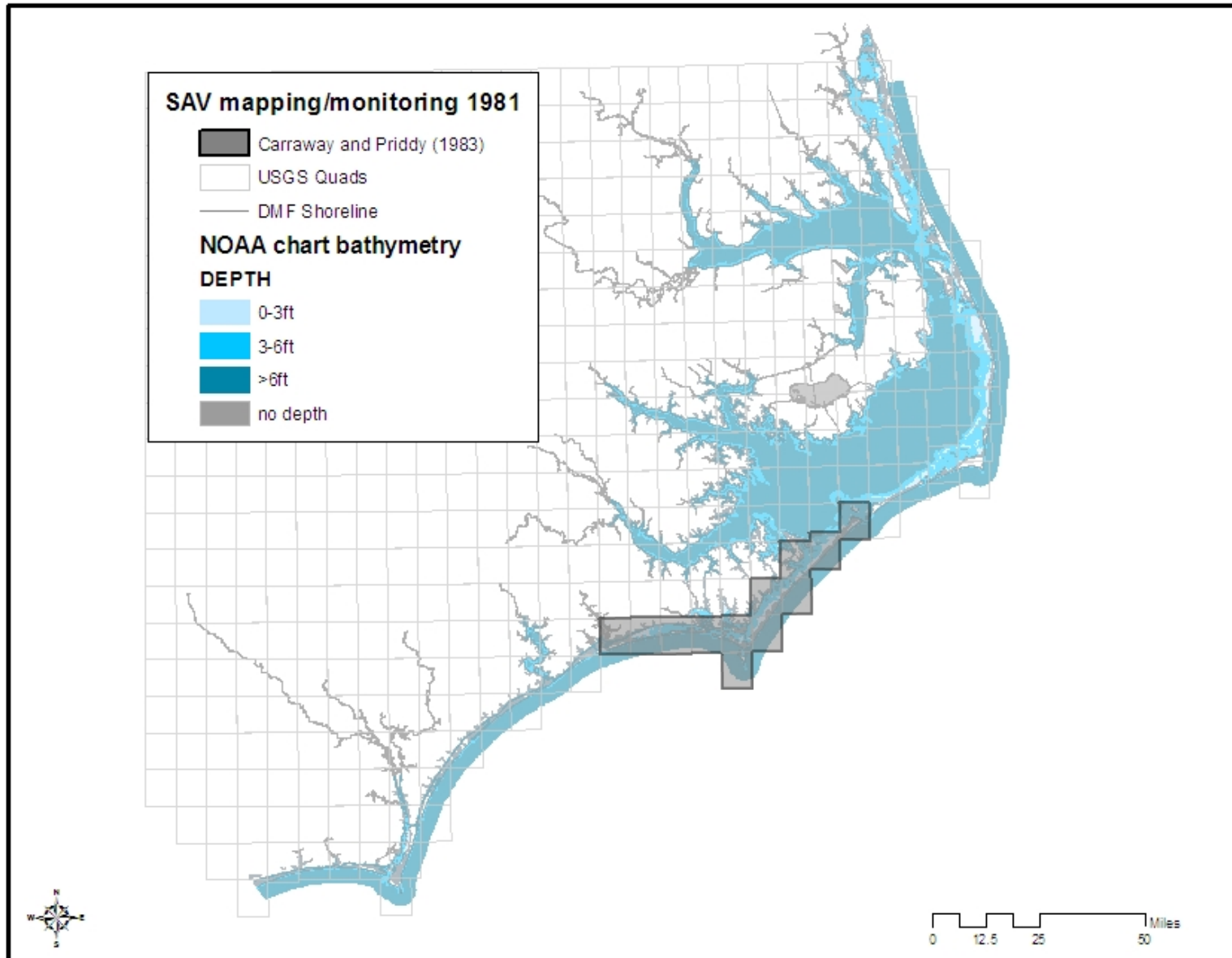
SAV Mapping Inventory (1981-2008)

LIST OF MAP LABELS

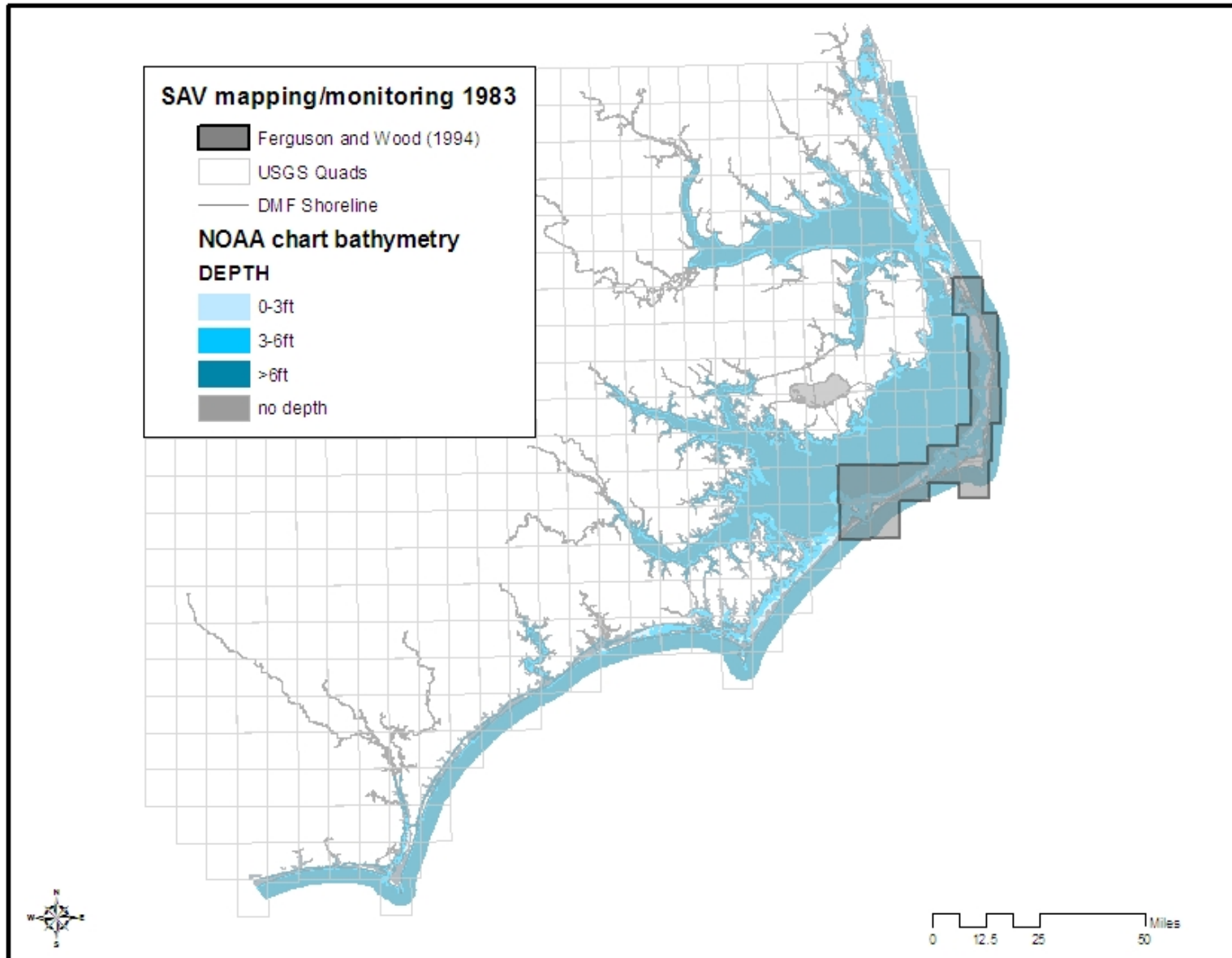
- Carroway and Priddy 1983 = Carroway, R.J., and L.J. Priddy. 1983. Mapping of submerged grass beds in Core and Bogue Sounds, Currituck County, North Carolina, by conventional aerial photography. CEIP Report No. 20, 88p. **Maps based on aerial photography.*
- Ferguson and Wood 1994 = Ferguson, R. L. and L.L. Wood. 1994. Rooted vascular aquatic beds in the Albemarle-Pamlico estuarine system. NMFS, NOAA, Beaufort, NC, Project No. 94-02, 103 p. **Maps based on aerial photography.*
- Davis and Brinson 1989 = Davis, G.L. and Brinson, 1989. A Survey of Submersed Aquatic Vegetation of the Currituck Sound and the Western Albemarle-Pamlico Estuarine System. Albemarle-Pamlico Estuarine Study Report 89-10. East Carolina University, Greenville, NC., 137 p. **Descriptive water body surveys conducted.*
- DWQ 1998 = DWQ (North Carolina Division of Water Quality). 1998. Neuse River estuary SAV ground-truthing study. DWQ, Unpub. Rep. 11p. **Maps based on aerial photography.*
- DMF (North Carolina Division of Marine Fisheries) Bottom Mapping Program - <http://www.ncdmf.net/habitat/shellmap.htm> **Maps based on interpolated transect data.*
- ECSU (Elizabeth City State University) Mapping Program - <http://www.ecsu.edu/ECSU/AcadDept/Geology/GEMSNewHomePageS05/index.htm> **Maps based on aerial photography.*
- DOT (North Carolina Department of Transportation) **Imagery available but not classified.*
- NCSU (North Carolina State University) – Dr. Eggleston (<http://www4.ncsu.edu/~dbeggles/>) **Maps based on aerial photography.*
- DWQ Rapid Response Teams - <http://www.esb.enr.state.nc.us/prrt.html> **Maps based on interpolated transect data.*
- APNEP SAV Partners - <http://www.apnep.org/pages/sav.html> **Imagery acquired in 2007-08 but not yet classified*

NOTE: Date on map legend indicates year imagery or survey was taken.

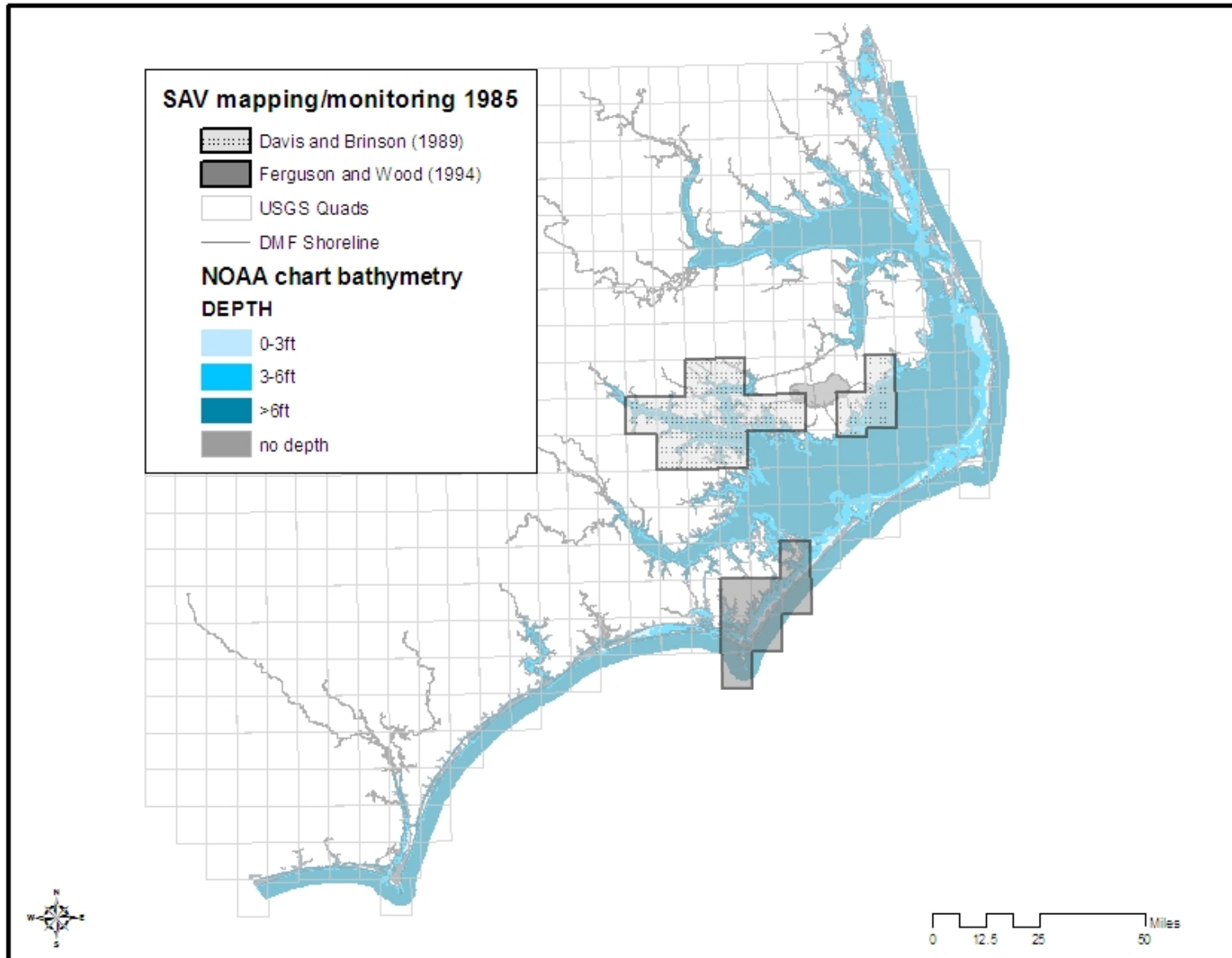
SAV Mapping Inventory (1981-2008)



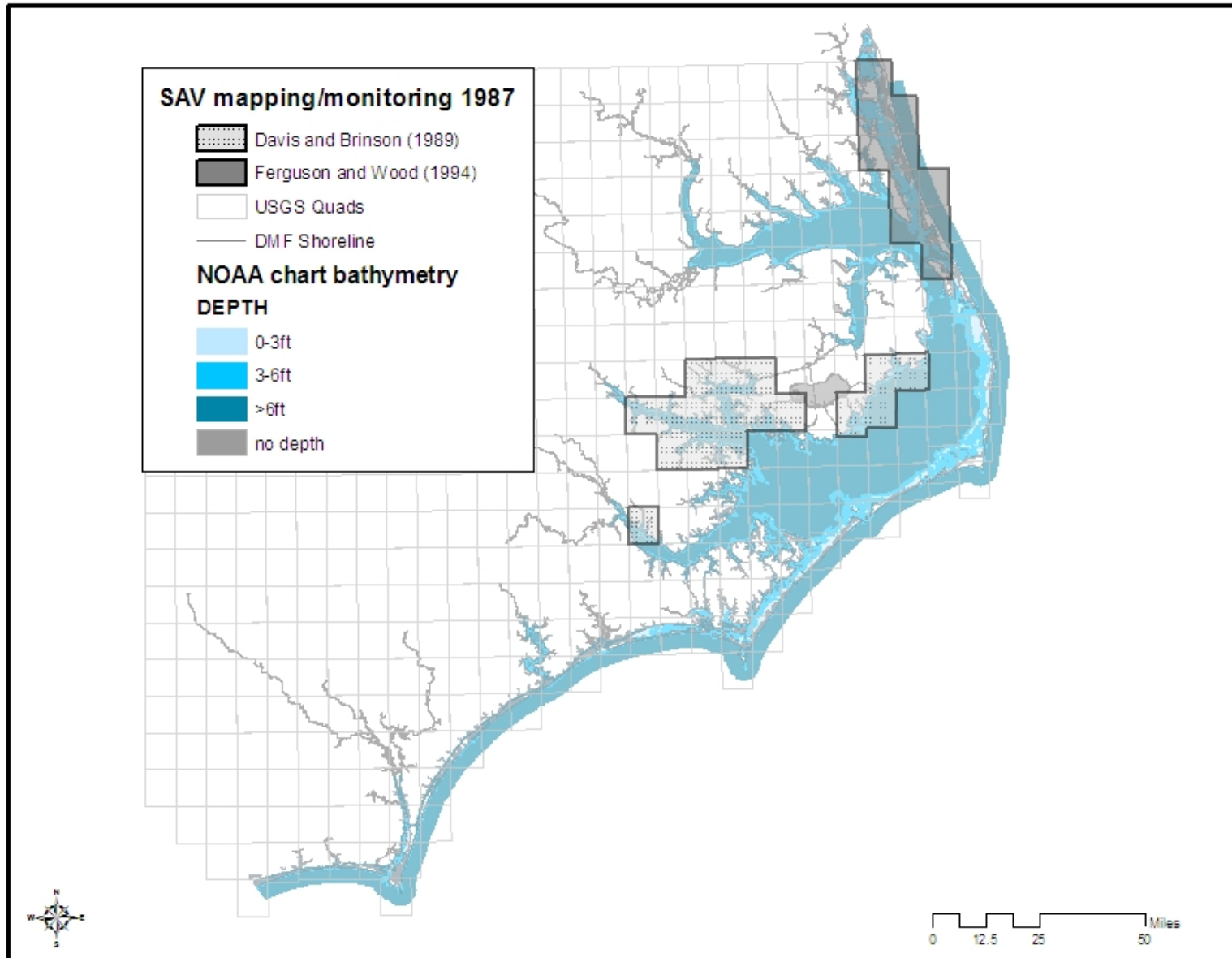
SAV Mapping Inventory (1981-2008)



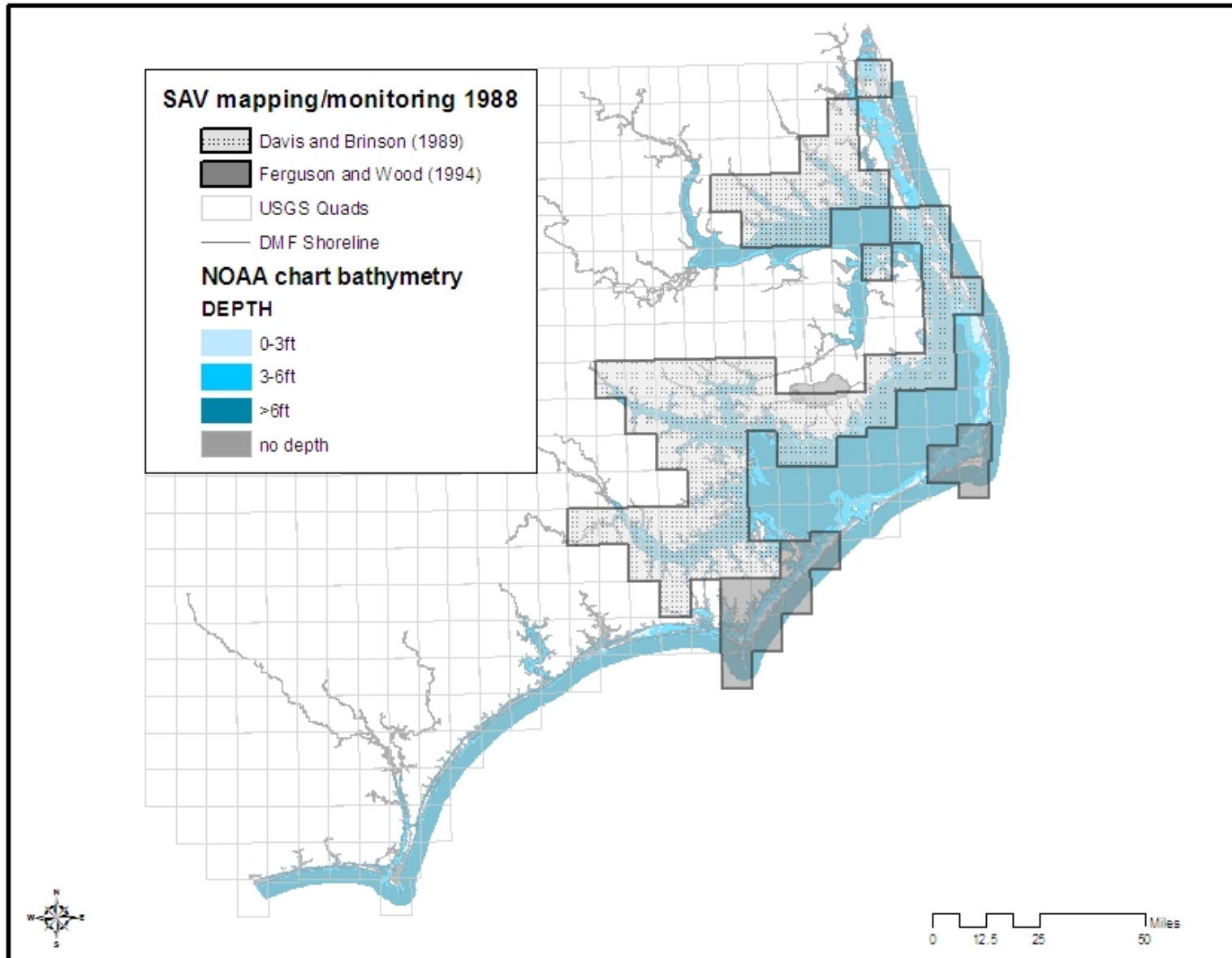
SAV Mapping Inventory (1981-2008)



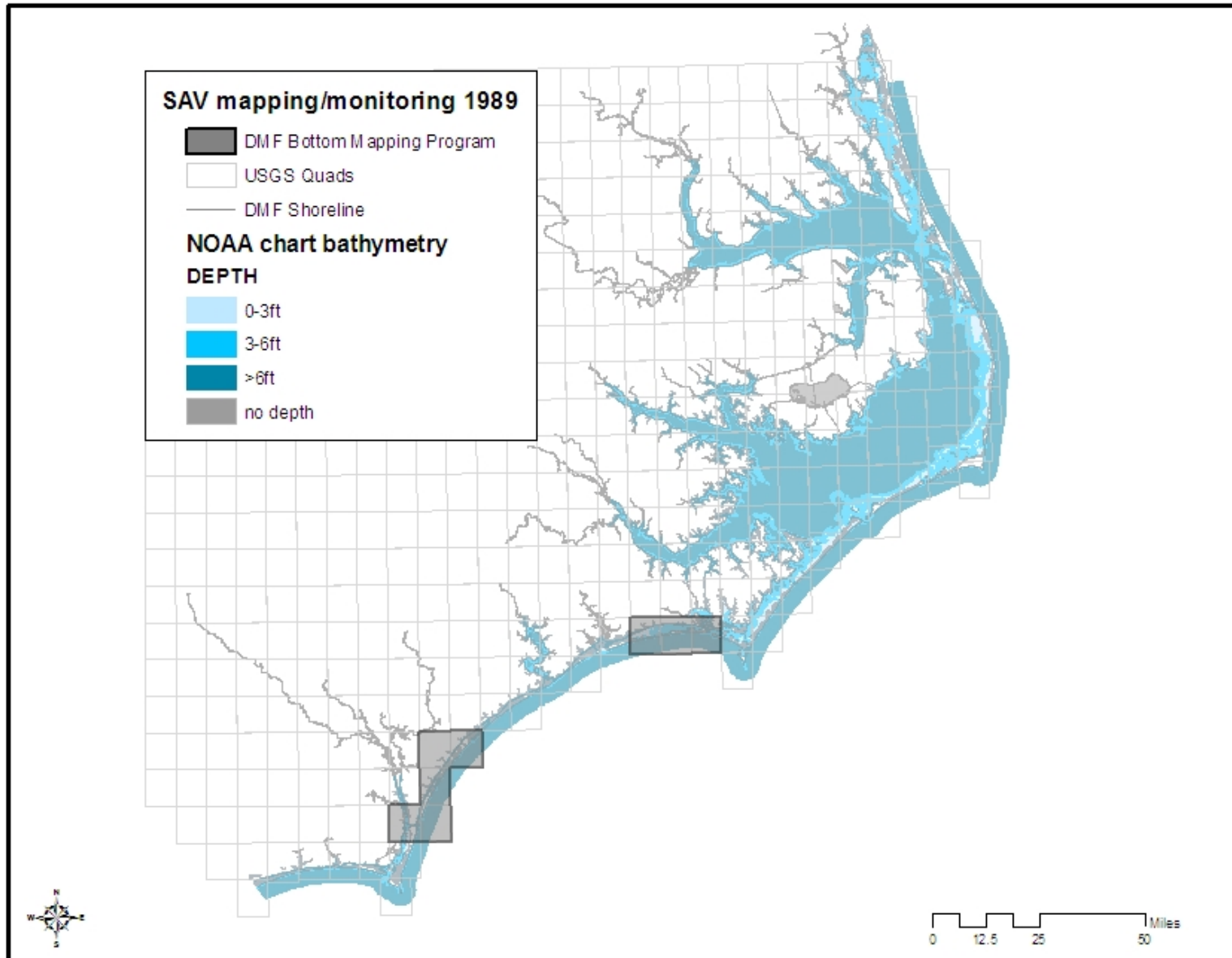
SAV Mapping Inventory (1981-2008)



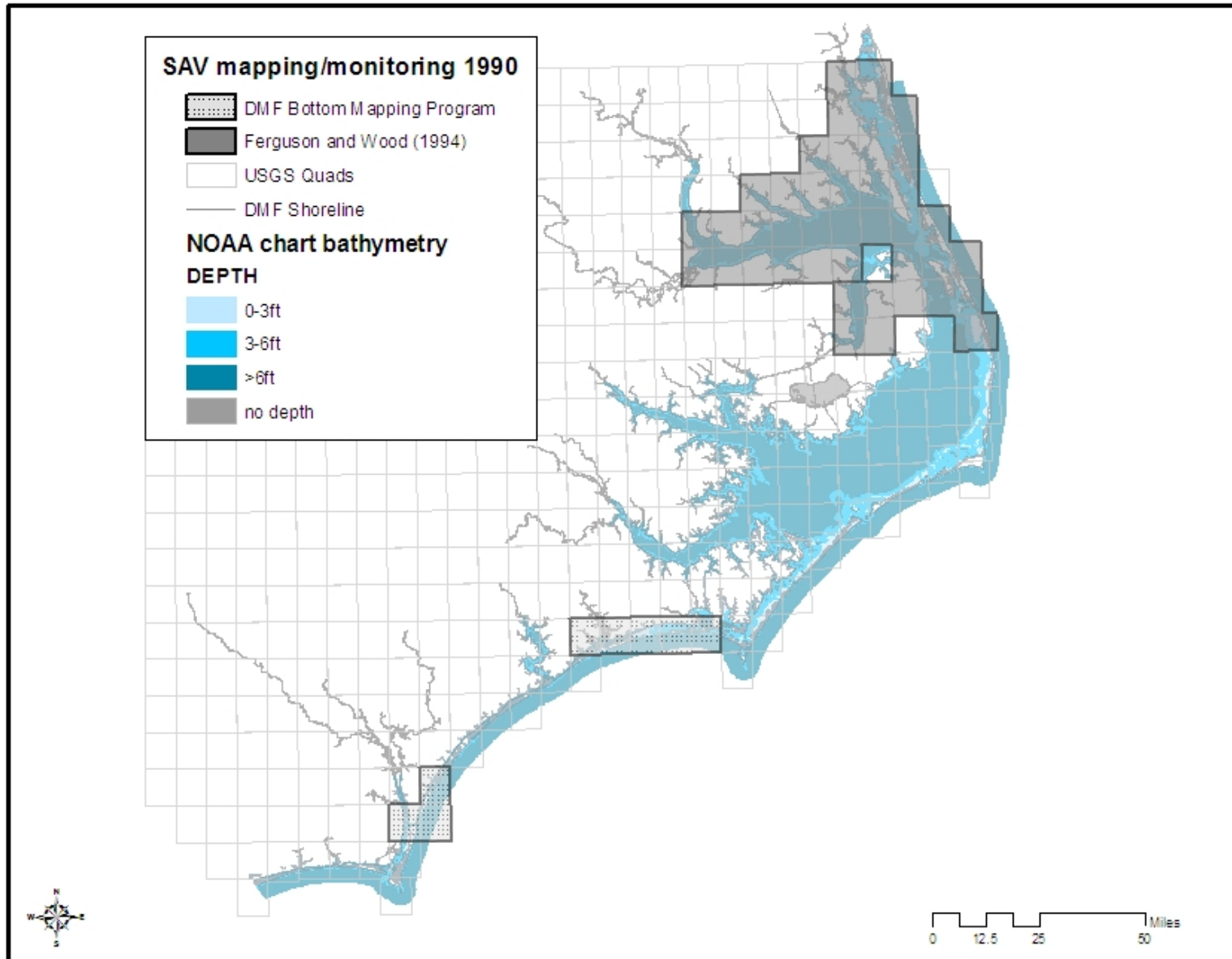
SAV Mapping Inventory (1981-2008)



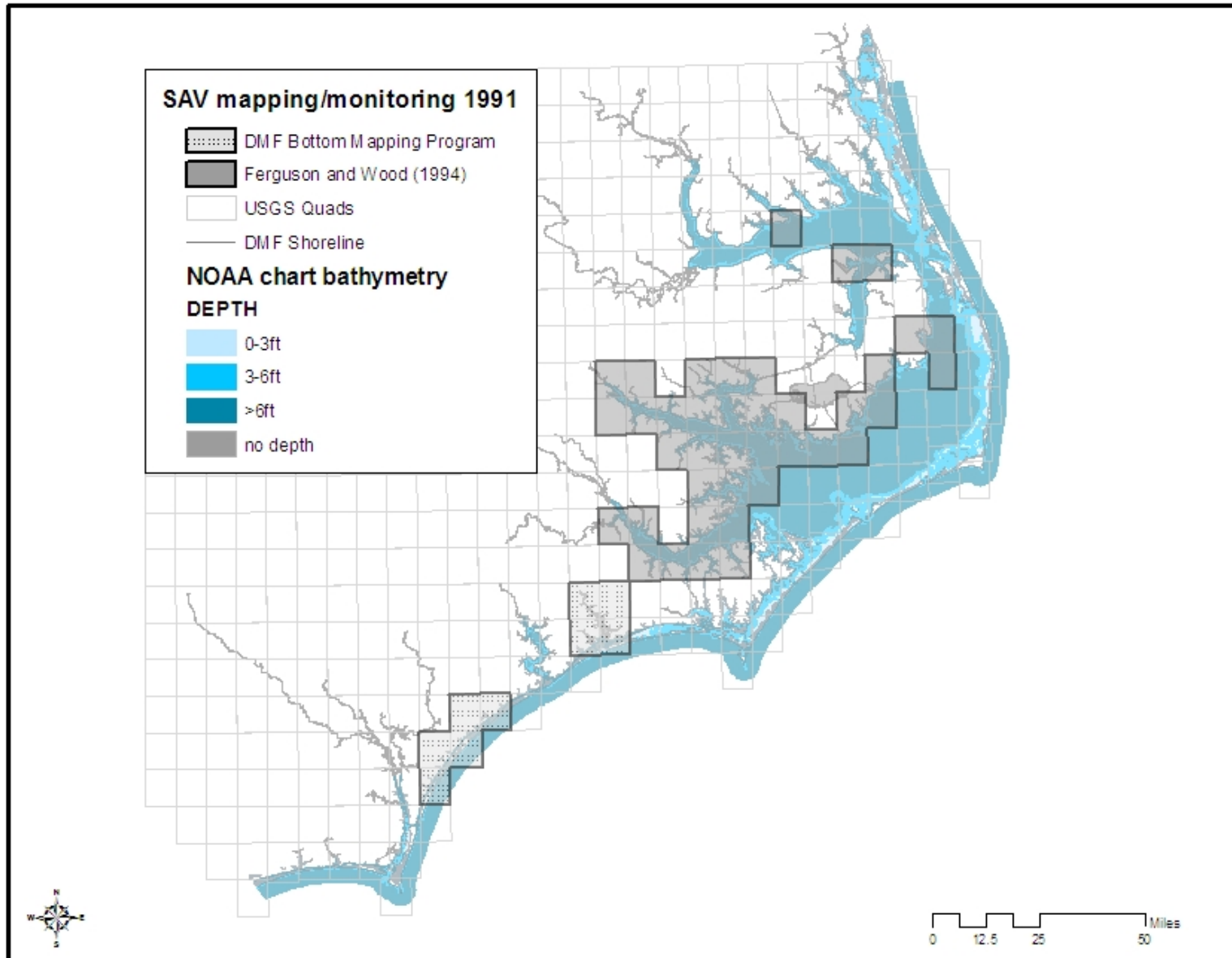
SAV Mapping Inventory (1981-2008)



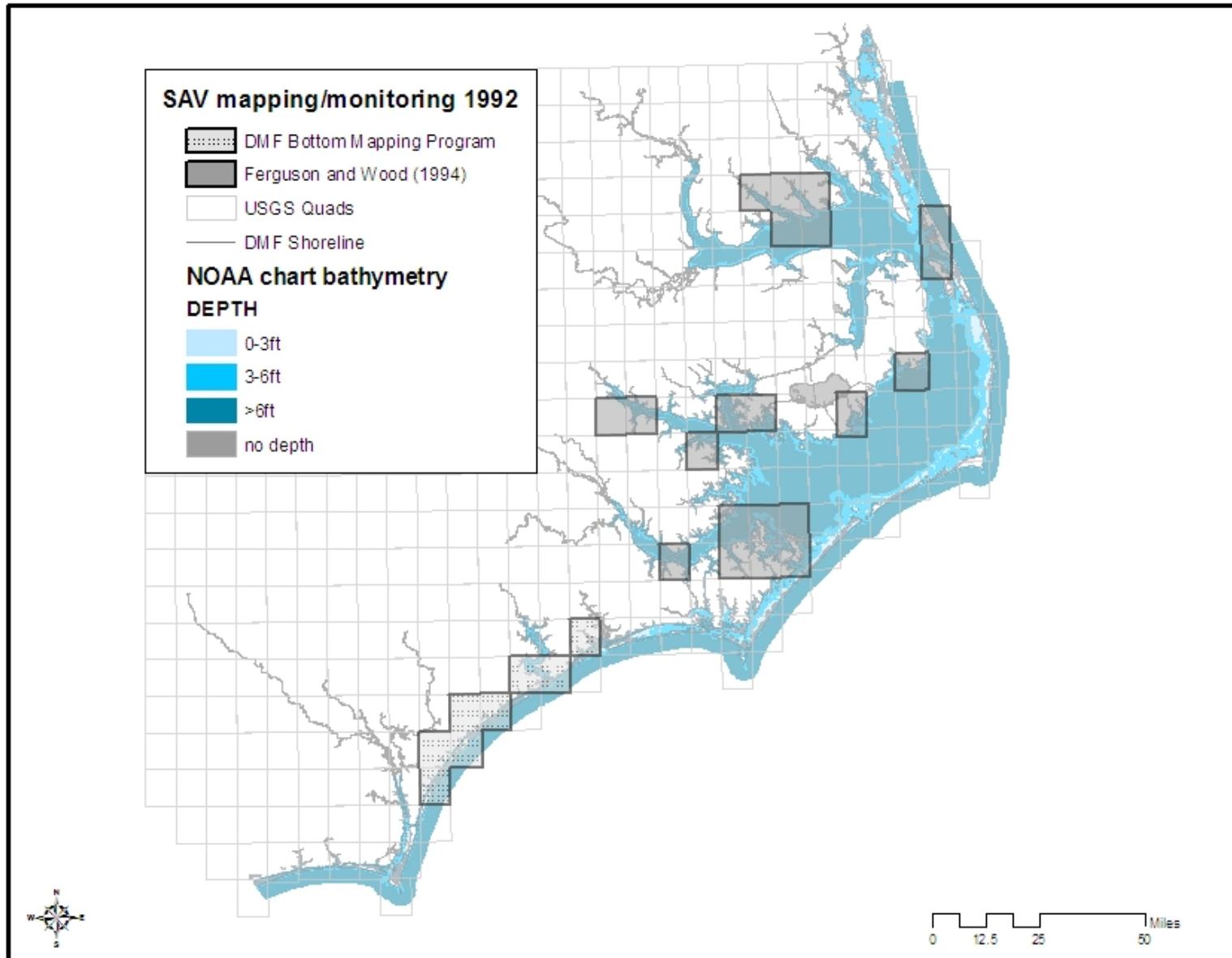
SAV Mapping Inventory (1981-2008)



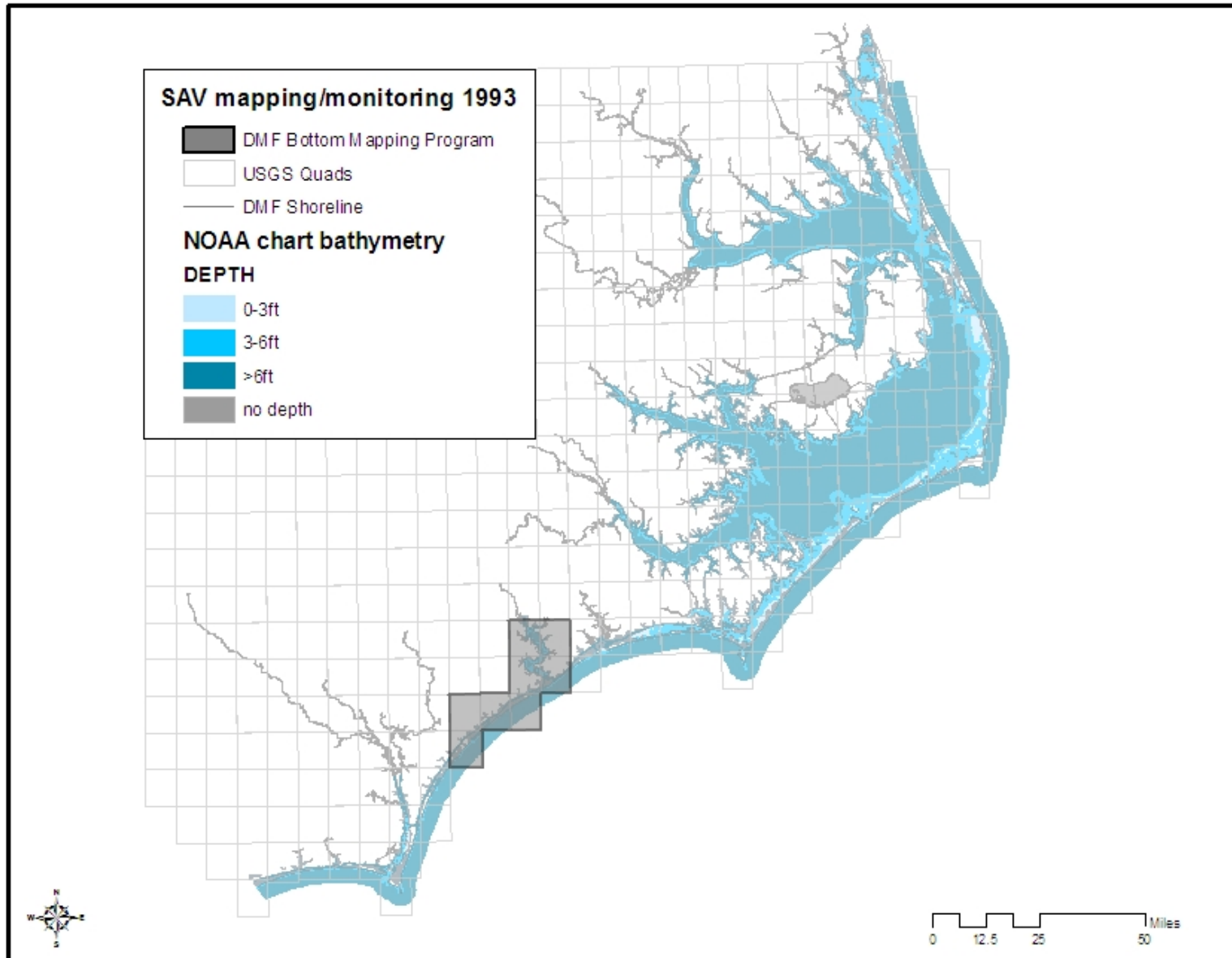
SAV Mapping Inventory (1981-2008)



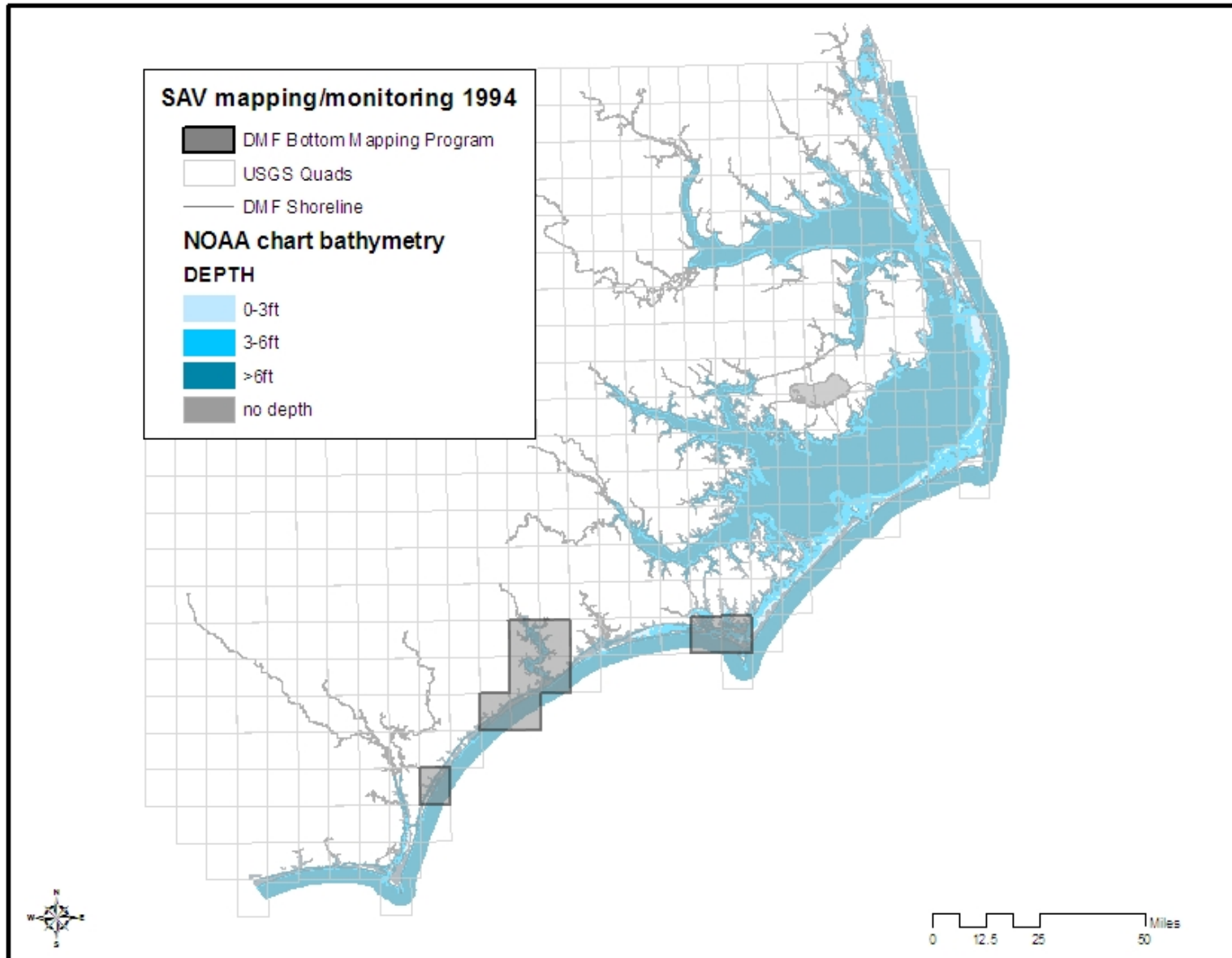
SAV Mapping Inventory (1981-2008)



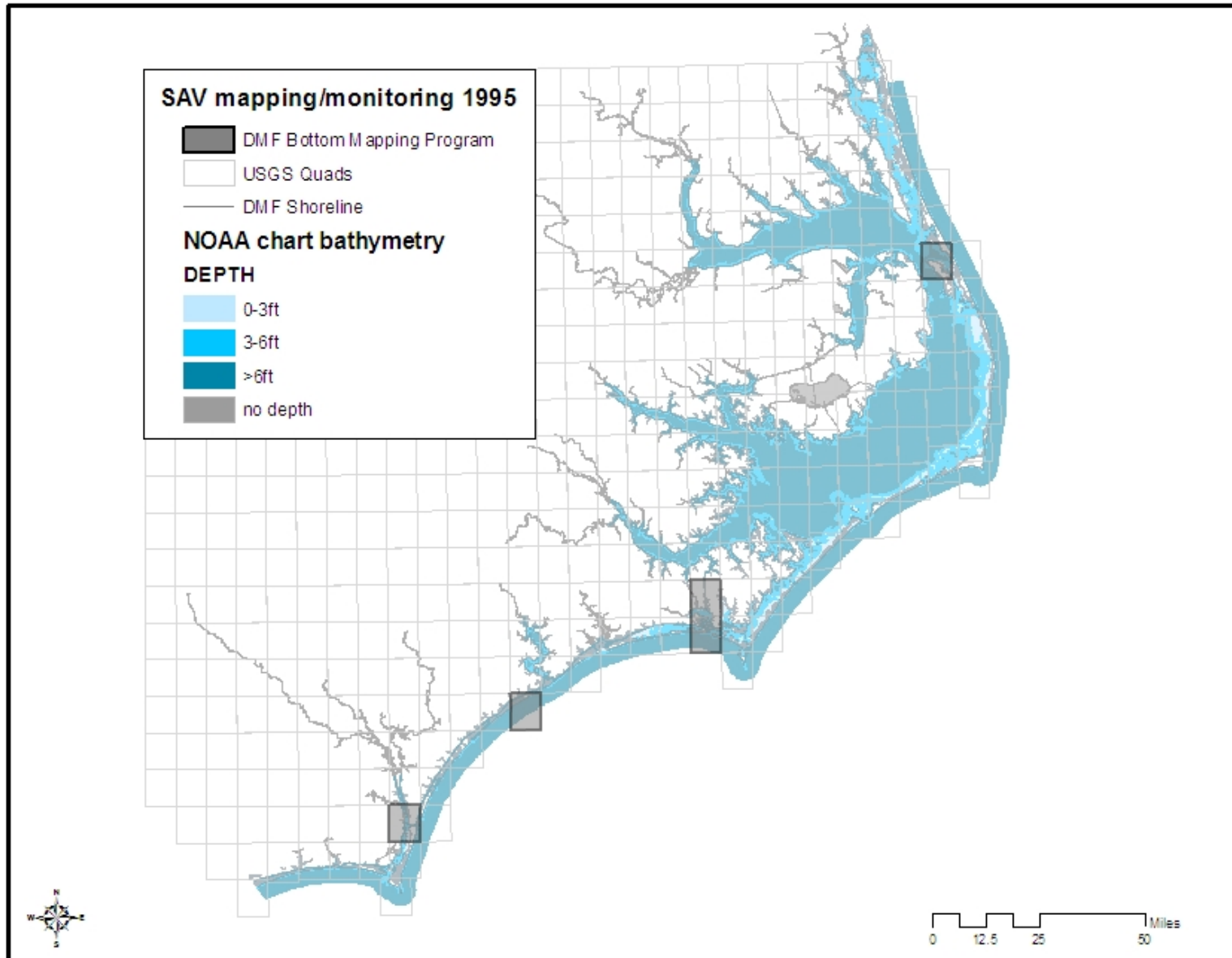
SAV Mapping Inventory (1981-2008)



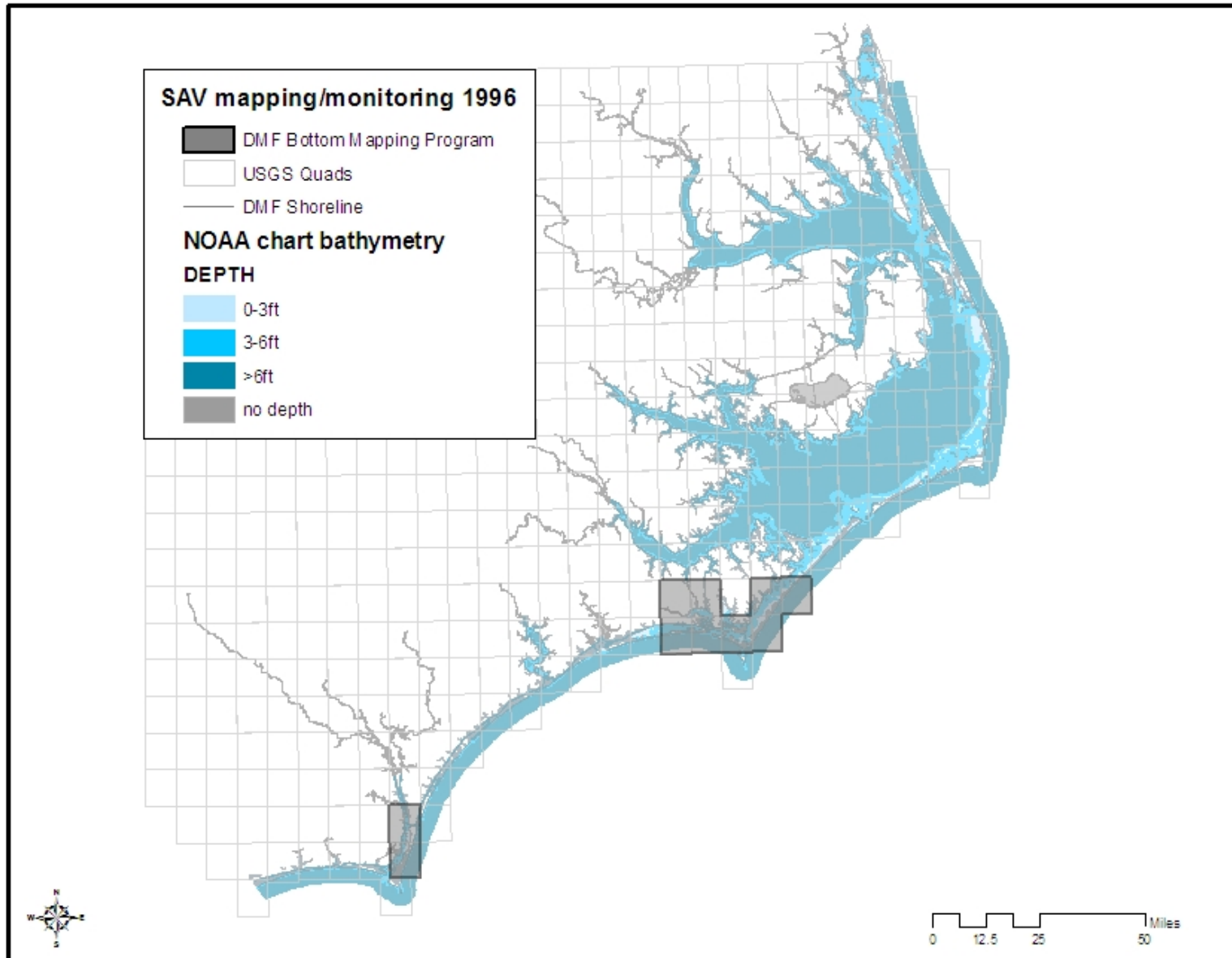
SAV Mapping Inventory (1981-2008)



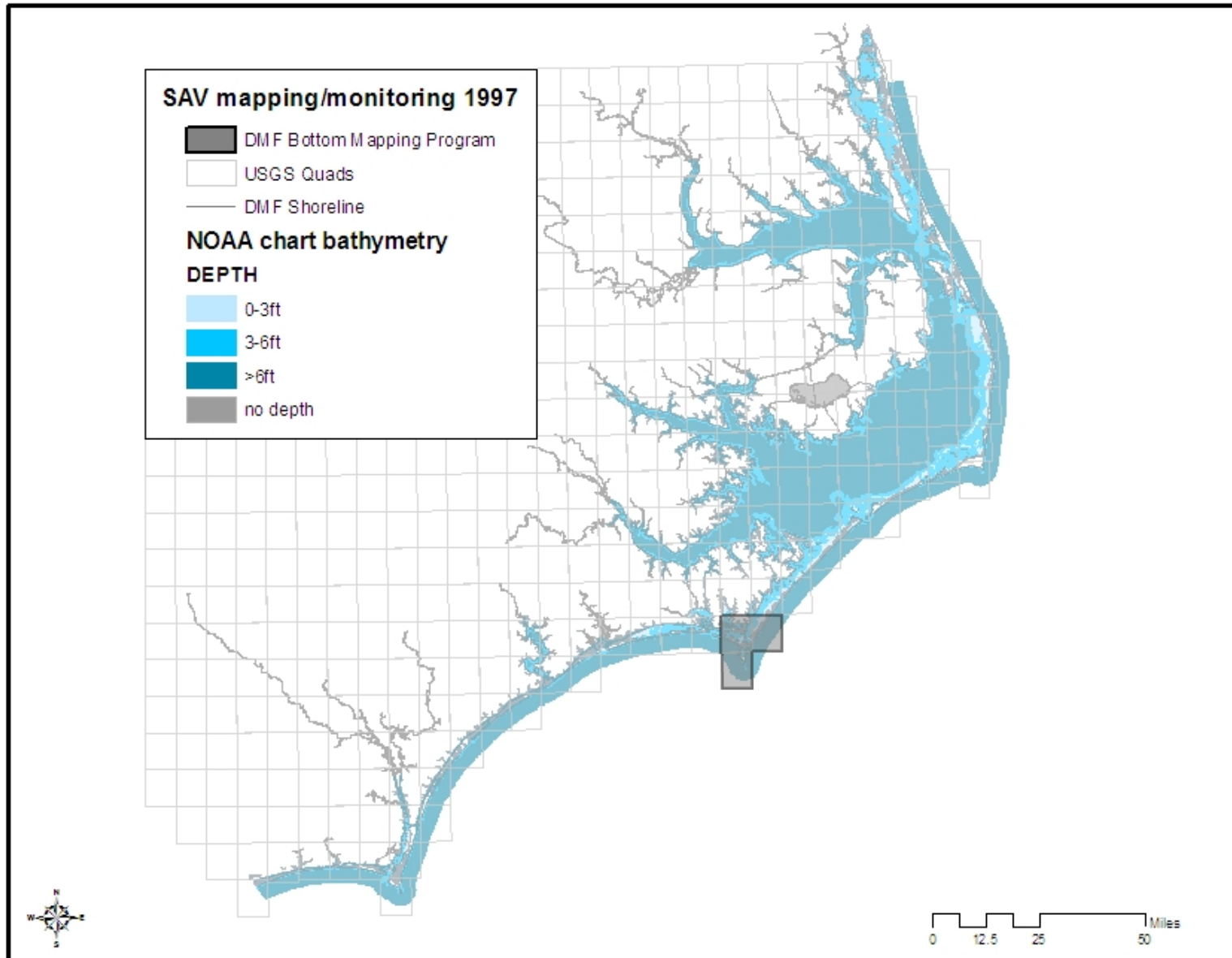
SAV Mapping Inventory (1981-2008)



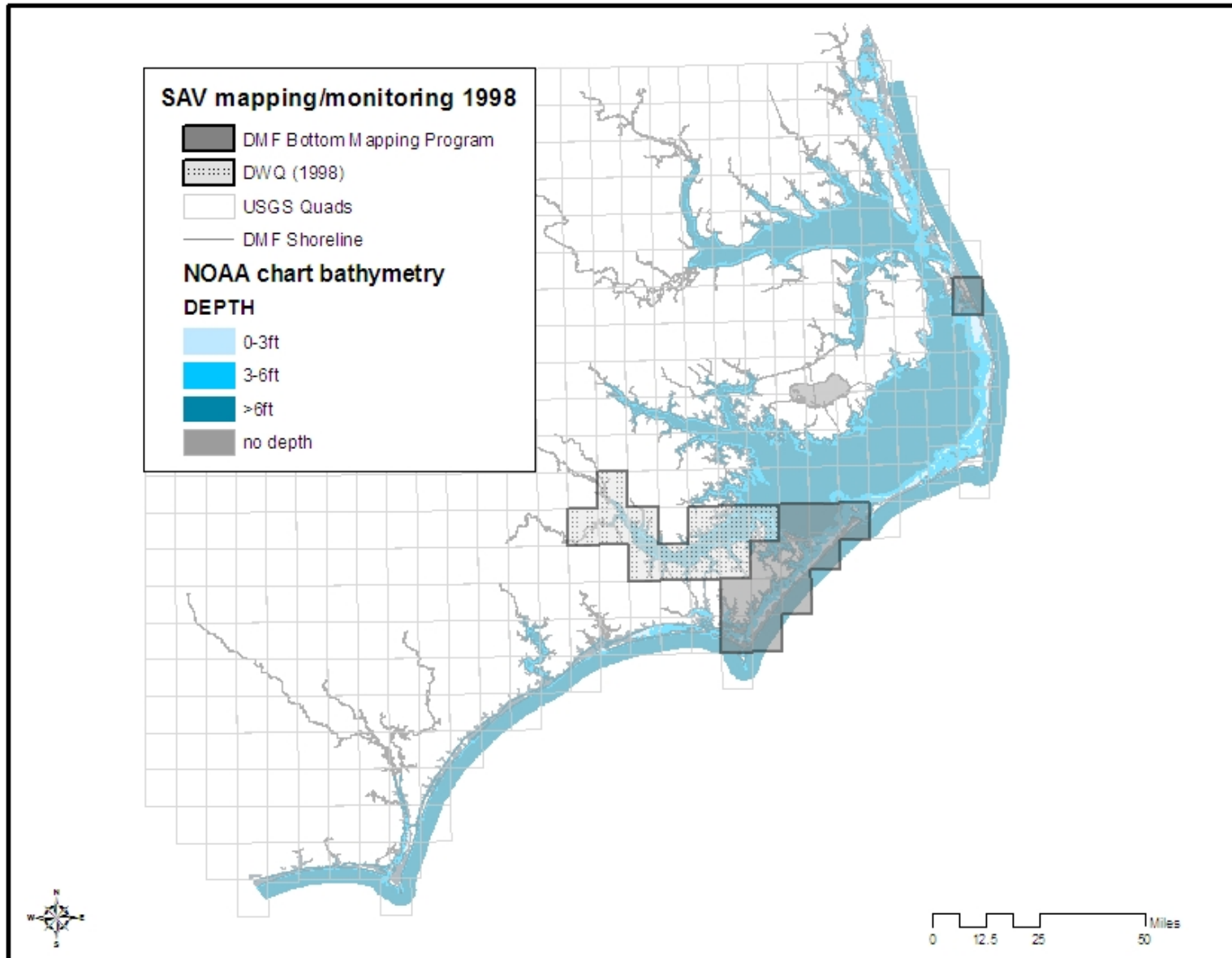
SAV Mapping Inventory (1981-2008)



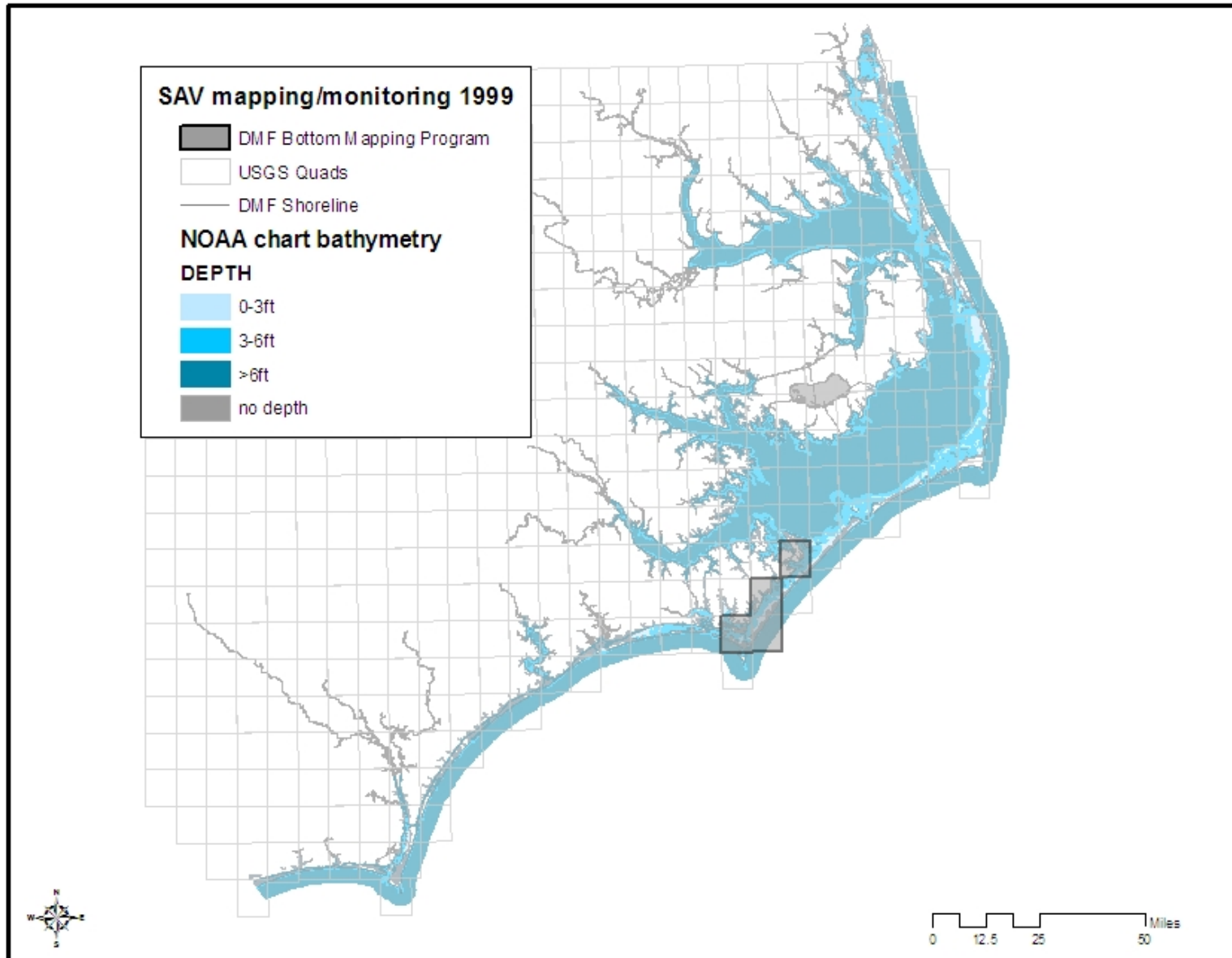
SAV Mapping Inventory (1981-2008)



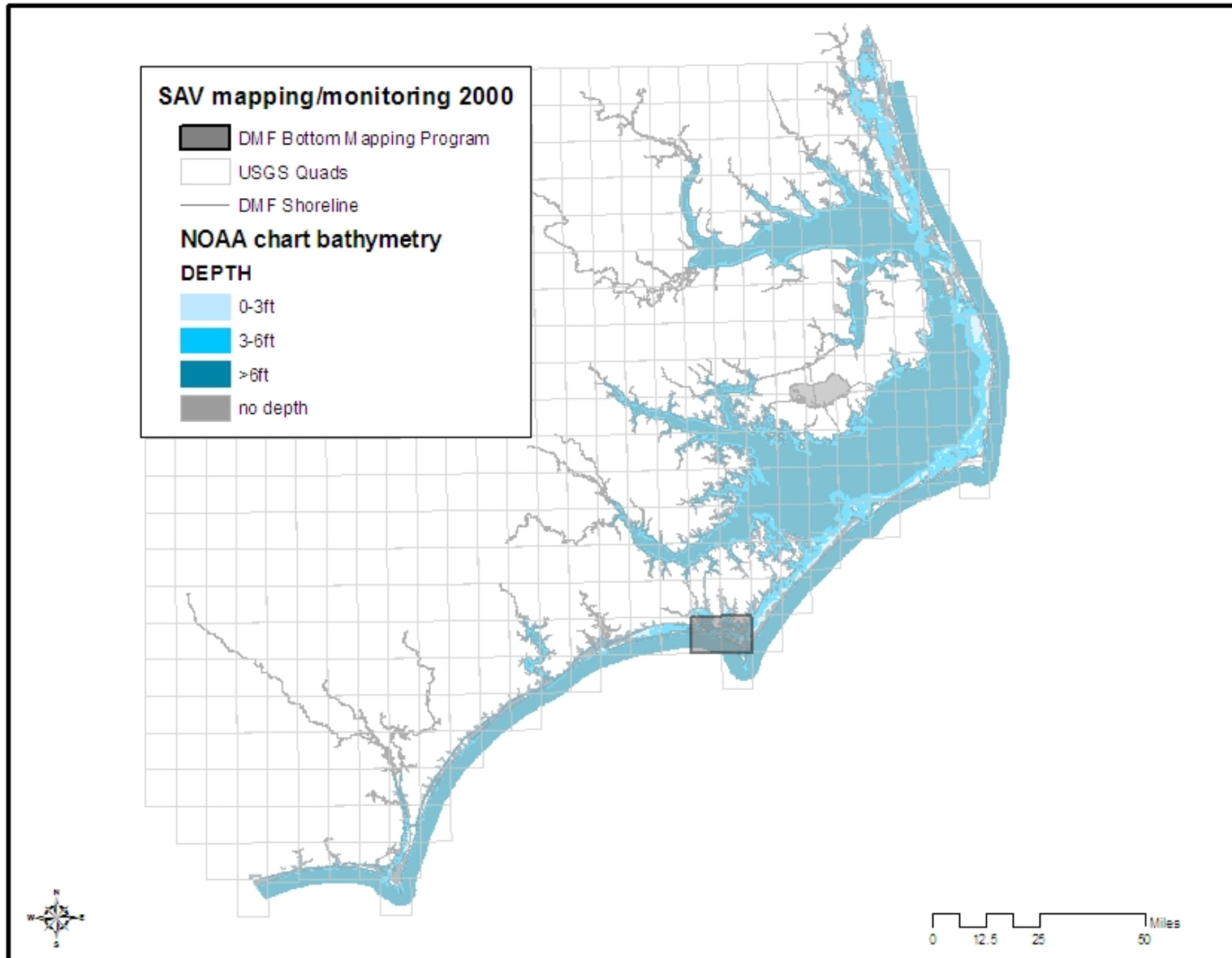
SAV Mapping Inventory (1981-2008)



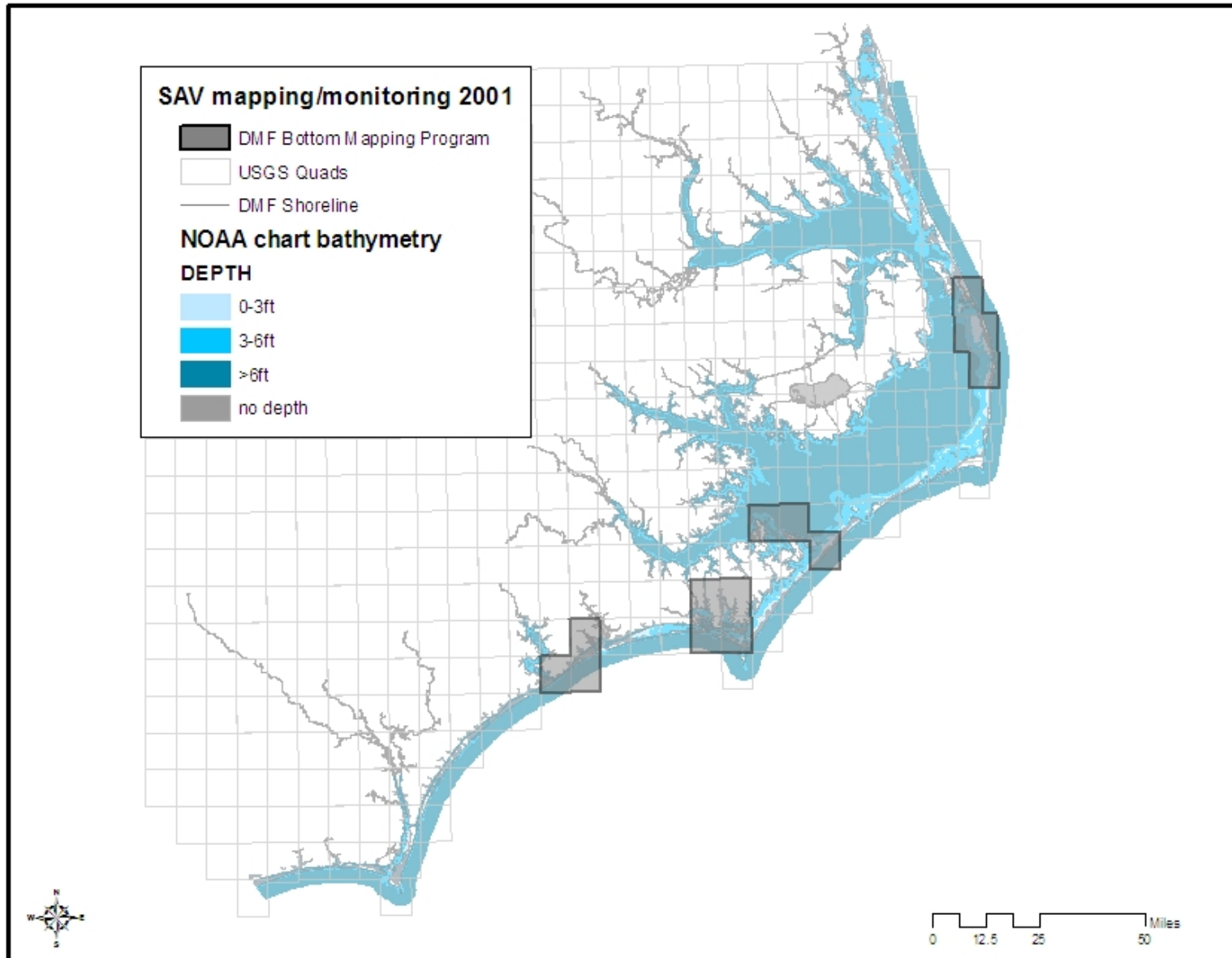
SAV Mapping Inventory (1981-2008)



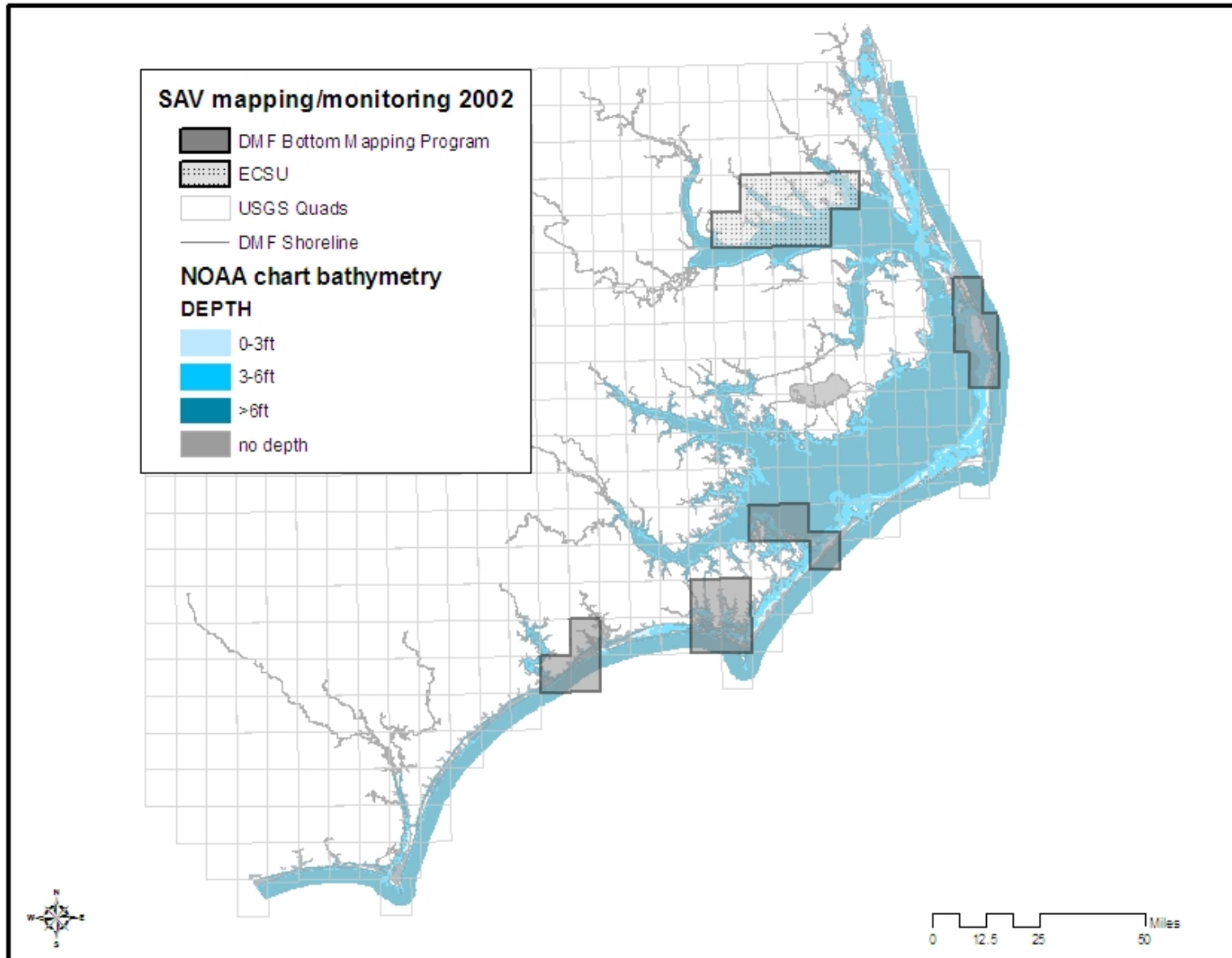
SAV Mapping Inventory (1981-2008)



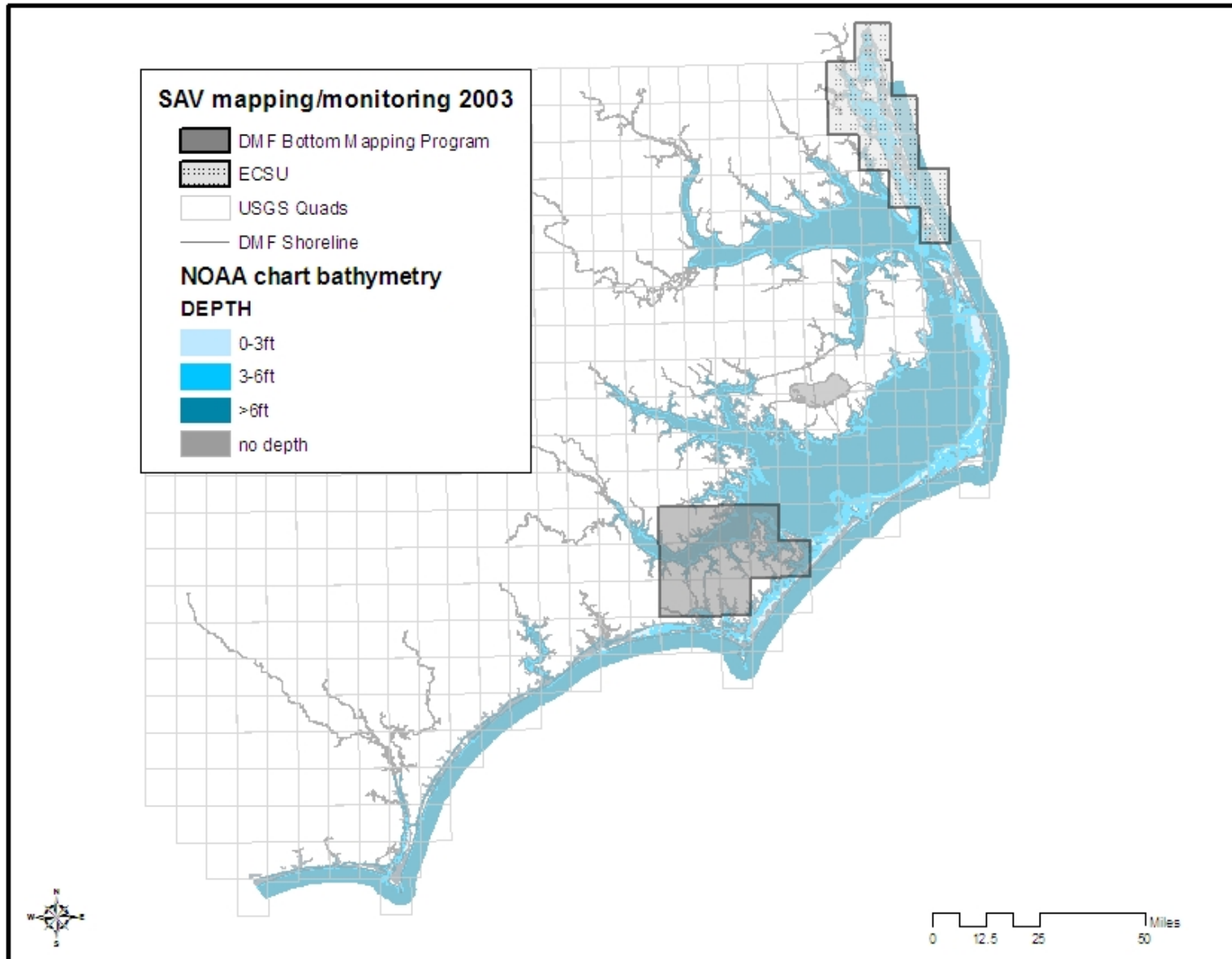
SAV Mapping Inventory (1981-2008)



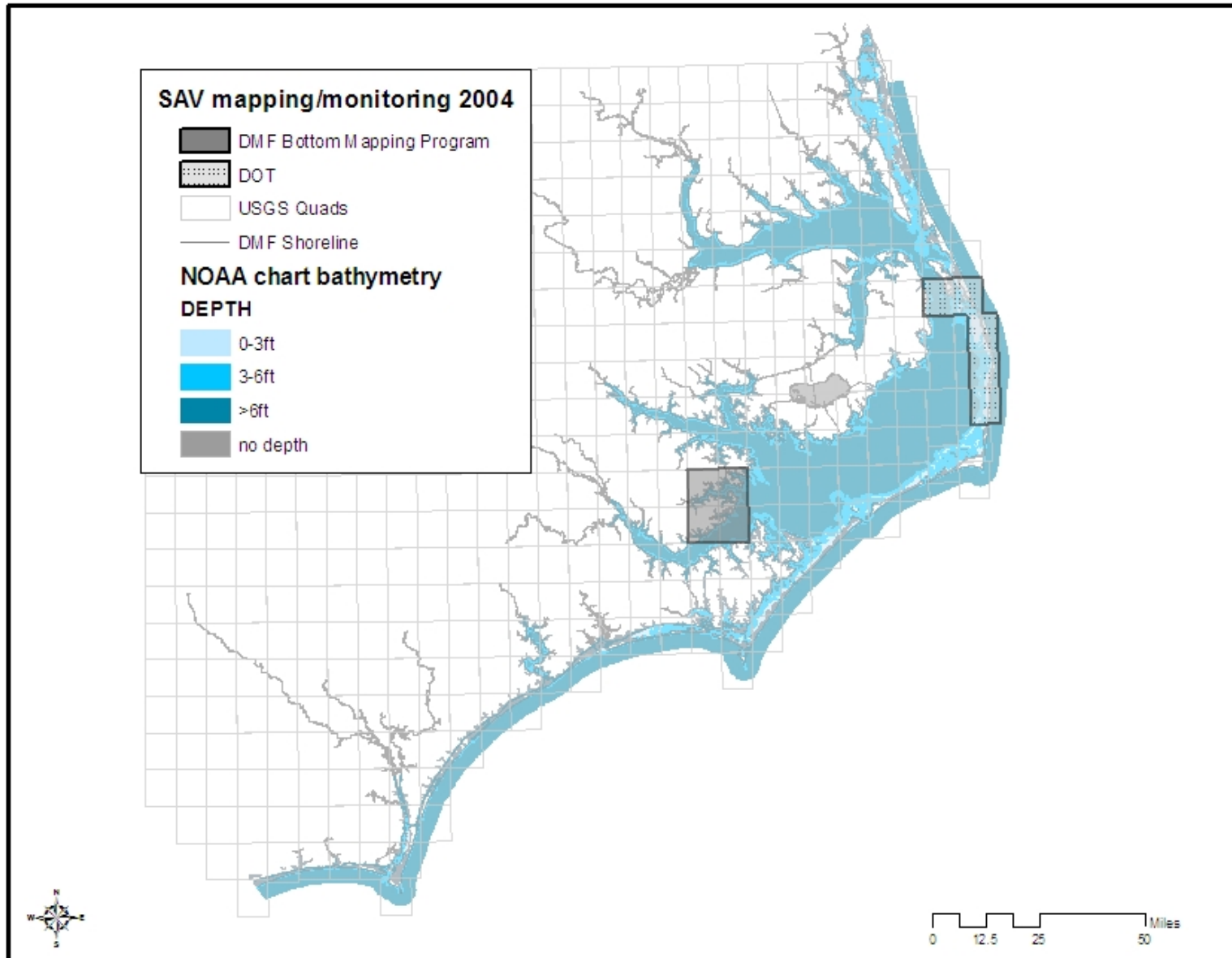
SAV Mapping Inventory (1981-2008)



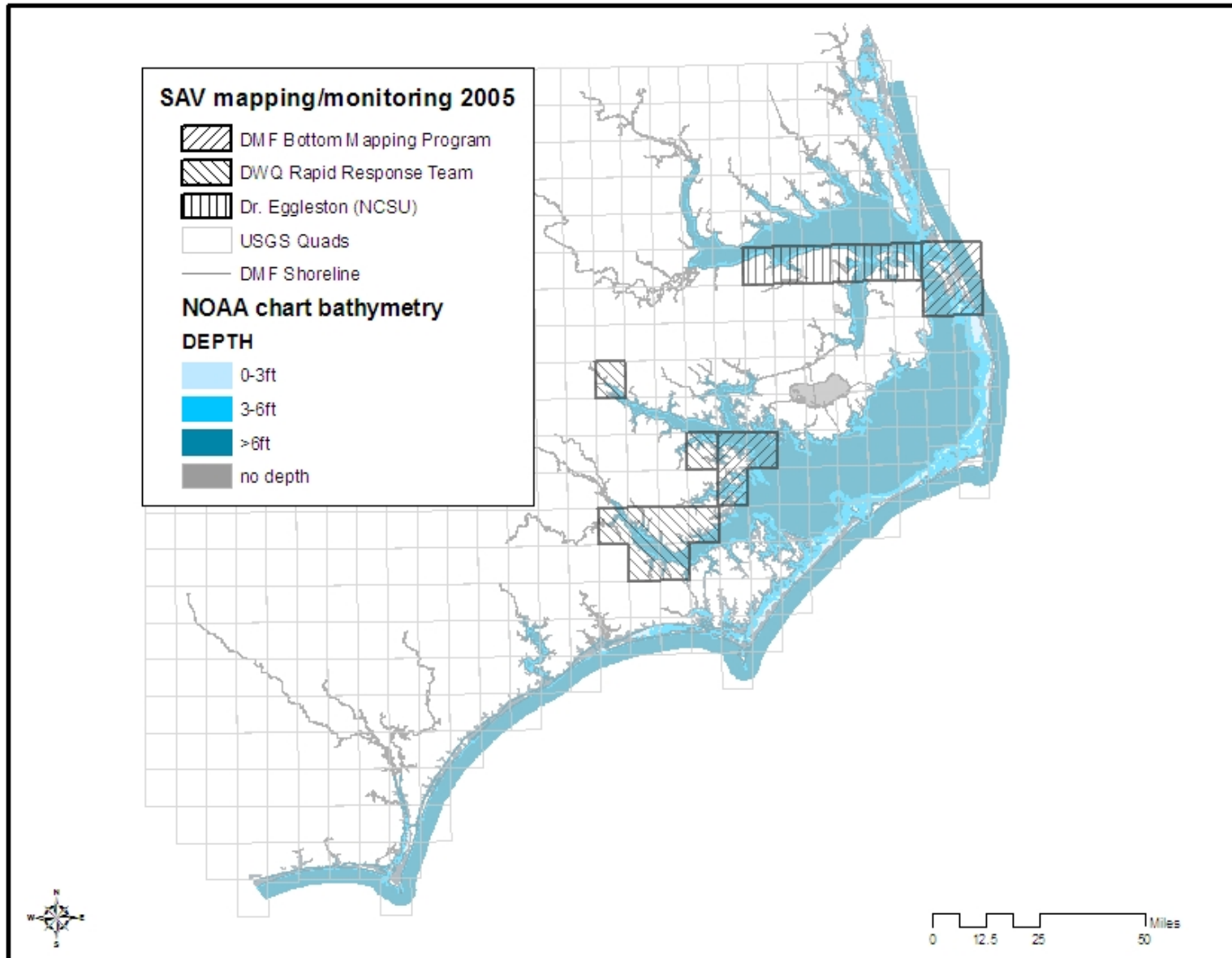
SAV Mapping Inventory (1981-2008)



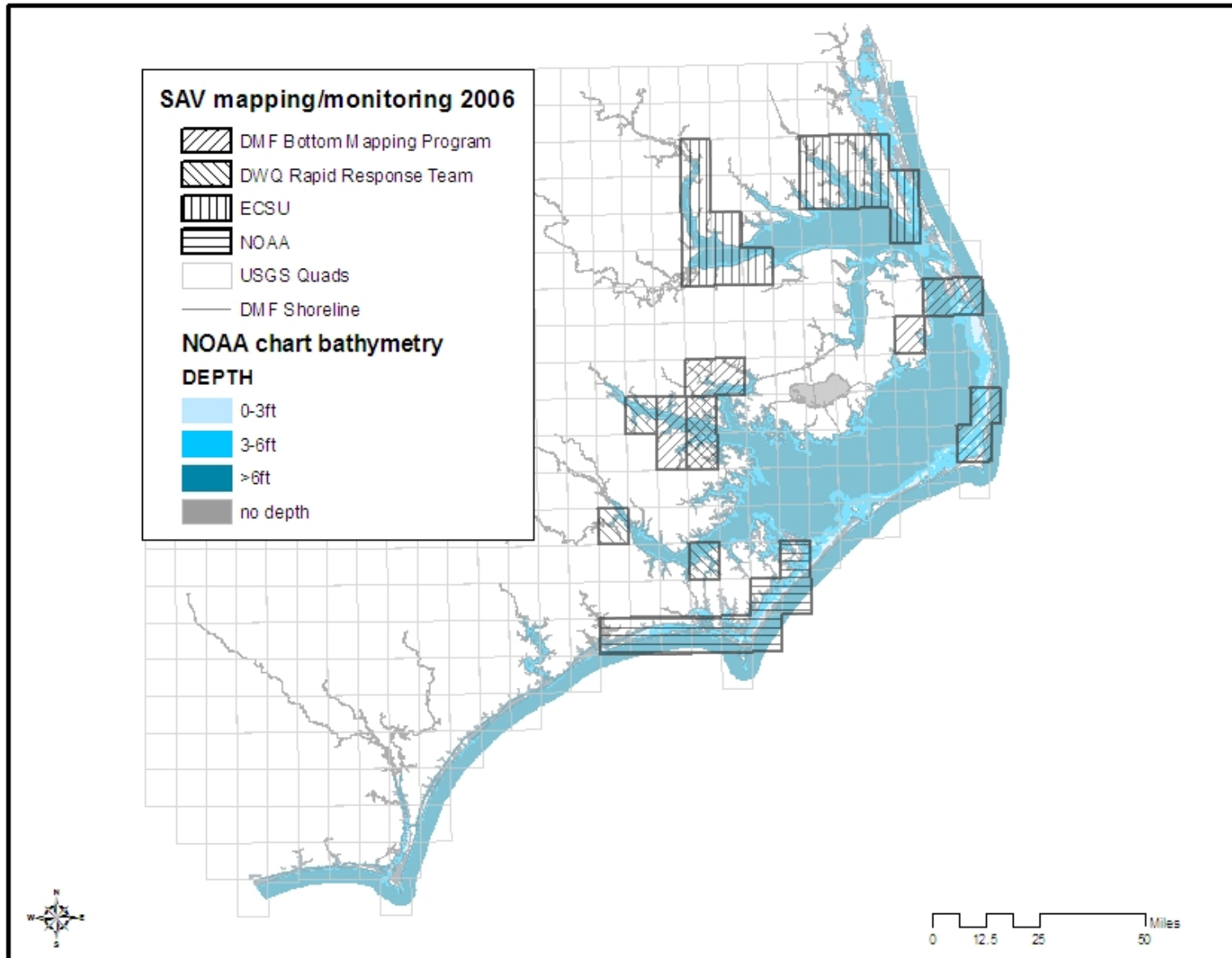
SAV Mapping Inventory (1981-2008)



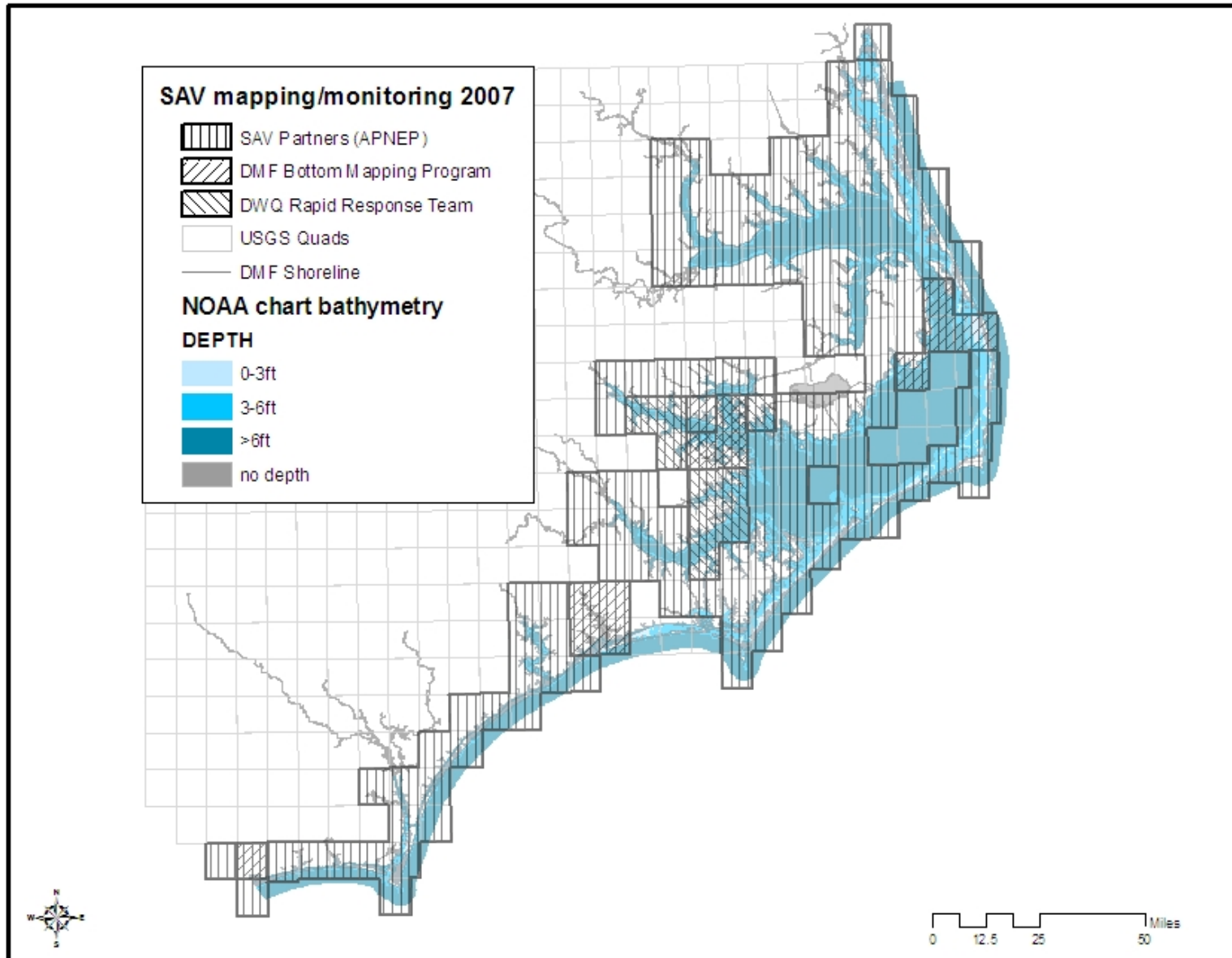
SAV Mapping Inventory (1981-2008)



SAV Mapping Inventory (1981-2008)



SAV Mapping Inventory (1981-2008)



SAV Mapping Inventory (1981-2008)

