

# Amendment 1 to the NC Red Drum FMP

## MFC Meeting

### 4-22-2008

## Summary of DMF and AC Recommendations and Public Comment

Inland AC	Raleigh	3/4/08
Central AC	New Bern	3/5/08
Northeast AC	Buxton	3/6/08
Southeast AC	Wilmington	3/11/08
Finfish AC	Washington	4/2/08
Red Drum AC	Washington	4/15/08



# Amendment 1 to the NC Red Drum FMP

## Issues:

1. Adult Harvest
2. Recreational Targeting of Adult Red Drum
3. Recreational Bag and Size Limit
4. Commercial Trip Limit
5. Estuarine Gill Net Discarded Bycatch of Red Drum



# Adult Harvest

Recommendation: Status quo (no fish over 27 in TL)

NCDMF, RDAC, NEAC, SEAC, Central AC, Inland AC, Finfish AC



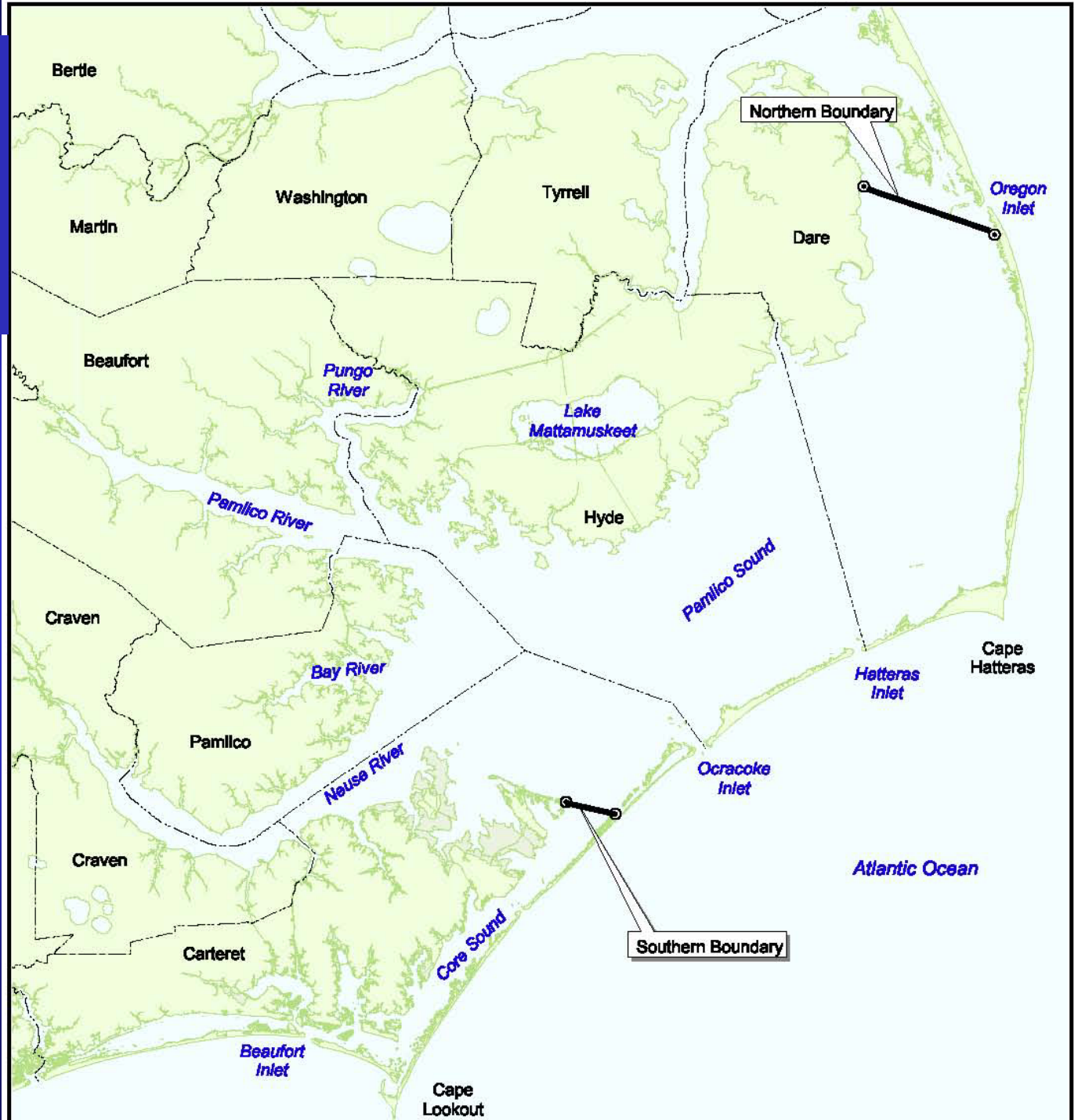
# Recreational Targeting of Adult Red Drum

Recommendation: Require all hooks >4/0 used in Pamlico Sound and its tributaries to be circle hooks from July through September

NCDMF, RDAC, NEAC, SEAC, Finfish AC, Inland AC, Central AC



July-Sept, circle hooks required if using larger than a 4/0 hook



# Recreational Bag and Size Limit

Recommendation: Status quo  
(1 fish 18-27 inches TL)

NCDMF, RDAC, NEAC, SEAC,  
Finfish AC, Inland AC, Central AC



# Commercial Trip Limit

Recommendation: Status quo (7 fish with 50:50 bycatch provision)

NCDMF, RDAC, SEAC, Central AC, Inland AC, Finfish AC

Recommendation: Increase daily trip limit to 10 fish with 50:50 bycatch provision

NEAC



# Commercial Trip Limit Cont.

Recommendation: Provision to possess up to 3 red drum without requiring they be offset by the weight of other marketable finfish until after the 4<sup>th</sup> fish is possessed. 50:50 provision would apply to all red drum possessed at time of sale.

NCDMF, RDAC, NEAC, SEAC,  
Central AC, Inland AC



# Commercial Trip Limit Cont.

Recommendation: Require 50:50 provision to be applied at time of sale/landing (not at time possessed)

Finfish AC



# Commercial Cap

- Currently 250,000 lb
- Fishing year – Sept 1 thru Aug 31
- Changed to allow for bycatch in fall flounder fishery as part of 2001 FMP
- Closed April 3, 2008
- RDAC motion – Split cap into two periods of Sept 1 to Apr 30 (150,000 lb) and May 1 to Aug 31 (100,000 lb). Left over poundage from first period can be rolled into second period.



# Small Mesh Attendance (<5 in)

**Current Rules under 3J .0103 & 3R .0112**

## **Year-round attendance areas include:**

- Portions of the Pamlico, Pungo and Neuse Rivers

## **Seasonal Attendance (May 1 to October 31) areas include:**

- All PNA, permanent SNA and select no trawl areas
- Within attendance line (modified no-trawl) along eastern Pamlico and Core Sound
- Within 200 yards of any shoreline, with the exception that the area from Core Sound and south is exempt in October

# Small Mesh Attendance (<5 in)

## Year-round attendance recommended options:

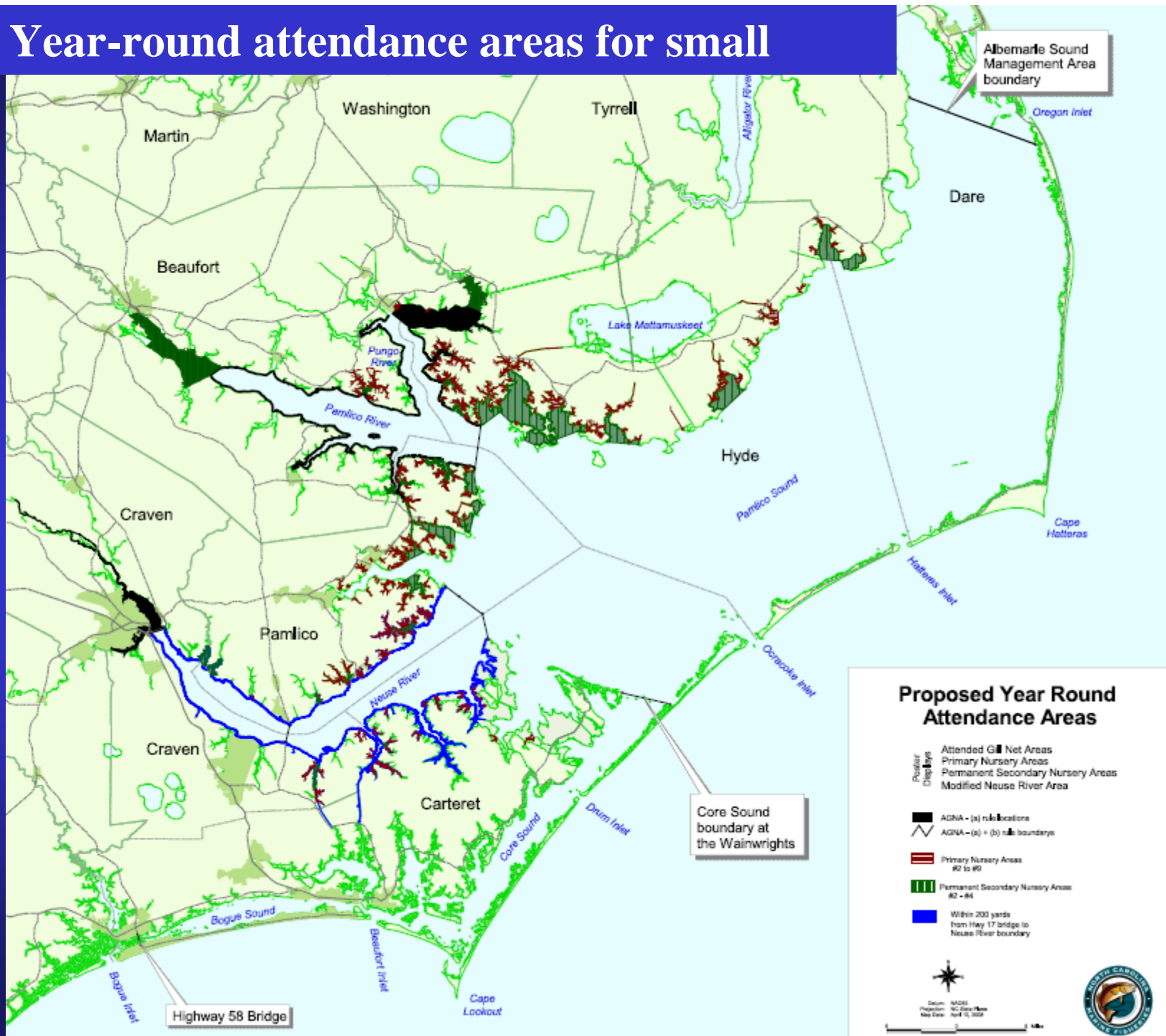
- Status quo - requires year-round in portions of the Neuse, Pamlico and Pungo Rivers (Central and Finfish AC)
- Expand attendance within 200 yards of shore out to the mouth of the Neuse River (NCDMF and RDAC)
- Require year-round in PNA and permanent SNA of Pamlico Sd. and tributaries excluding ASMA and Core Sound south (RDAC, NEAC, SEAC)



# Year-round Small Mesh Attendance (<5 in)



# Proposed Year-round attendance areas for small mesh



## Small Mesh Attendance (<5 in)

### Seasonal attendance recommended options:

- Status quo –May through October  
(Central AC & Finfish AC)
  
- Extend duration from May
  - through November  
(NCDMF, RDAC, NEAC, SEAC)
  
  - through December  
(Inland AC)



## Small Mesh Attendance (<5 in)

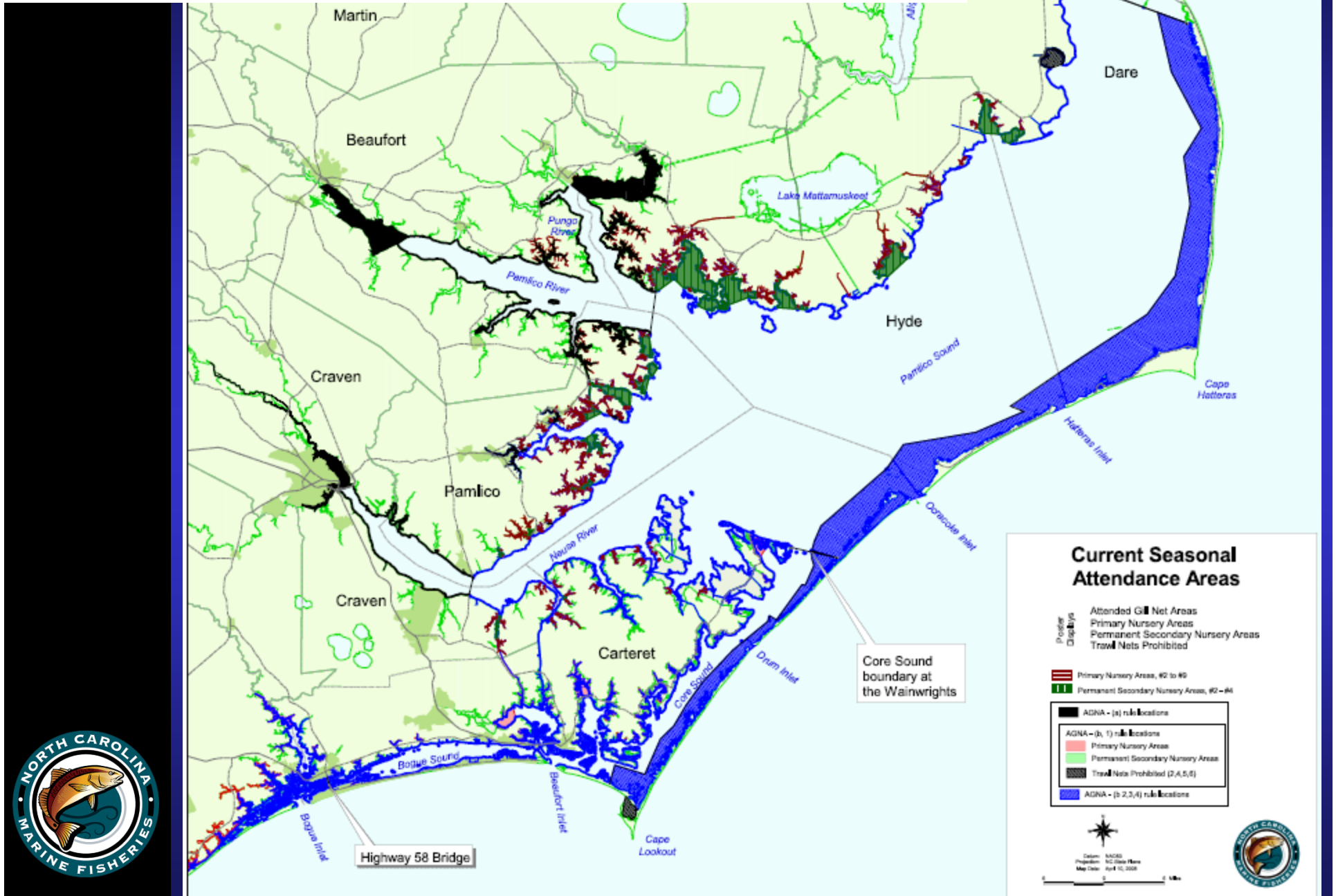
### Seasonal attendance recommended options:

Modify distance from shore requirement (currently 200 yds) with exemption for area of Core Sd. and south during October

- Status quo (RDAC, SEAC, NEAC, Finfish AC, Central AC)
- 200 yards north of Core Sd. and 100 yards from Core Sd south (Inland AC)
- 200 yards in Pamlico, Pungo, Neuse and Bay Rivers and 50 yards in other regions, exempting the area south of the HWY 58 bridge (NCDMF)

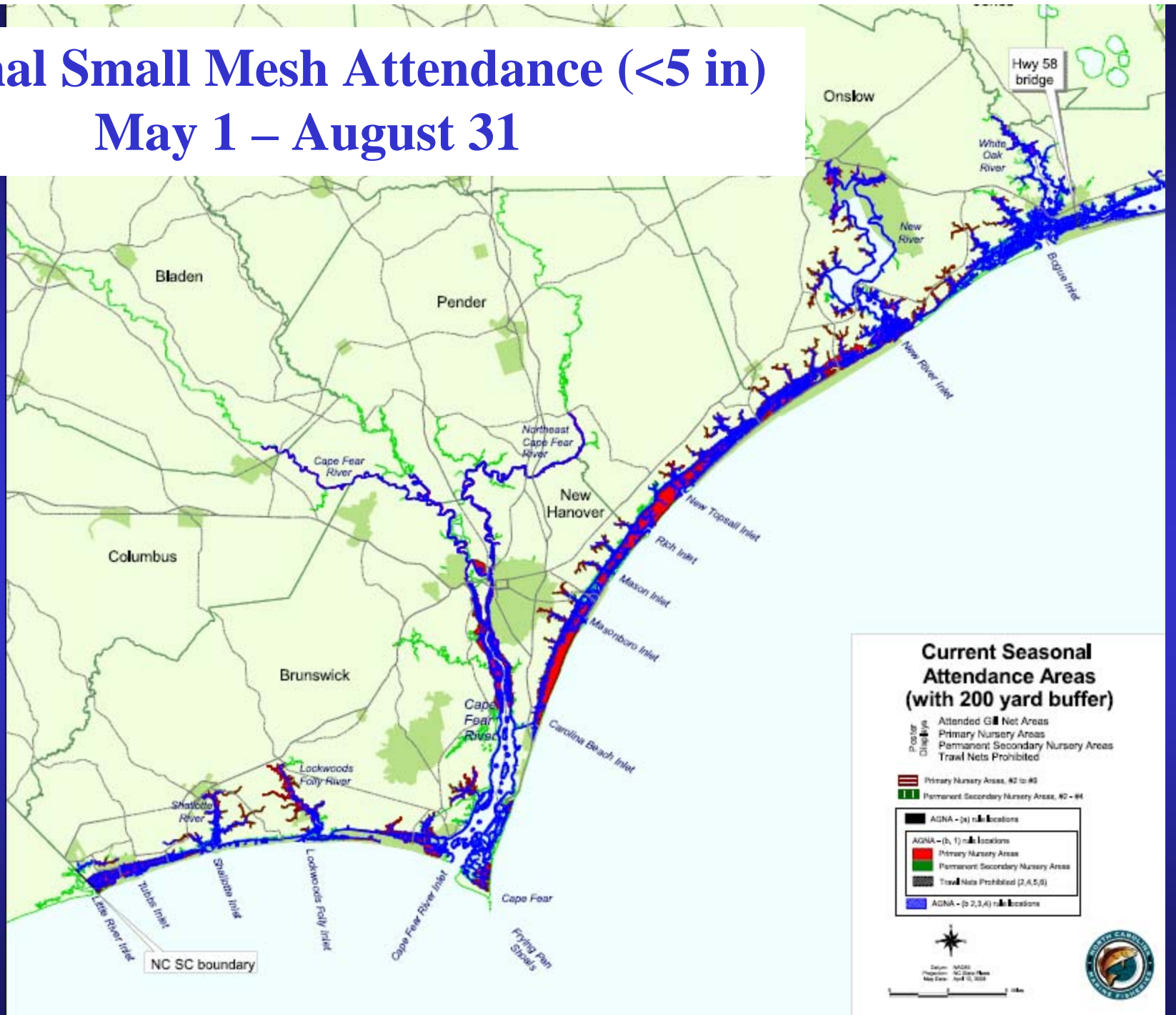


# Seasonal Small Mesh Attendance (<5 in)



# Seasonal Small Mesh Attendance (<5 in)

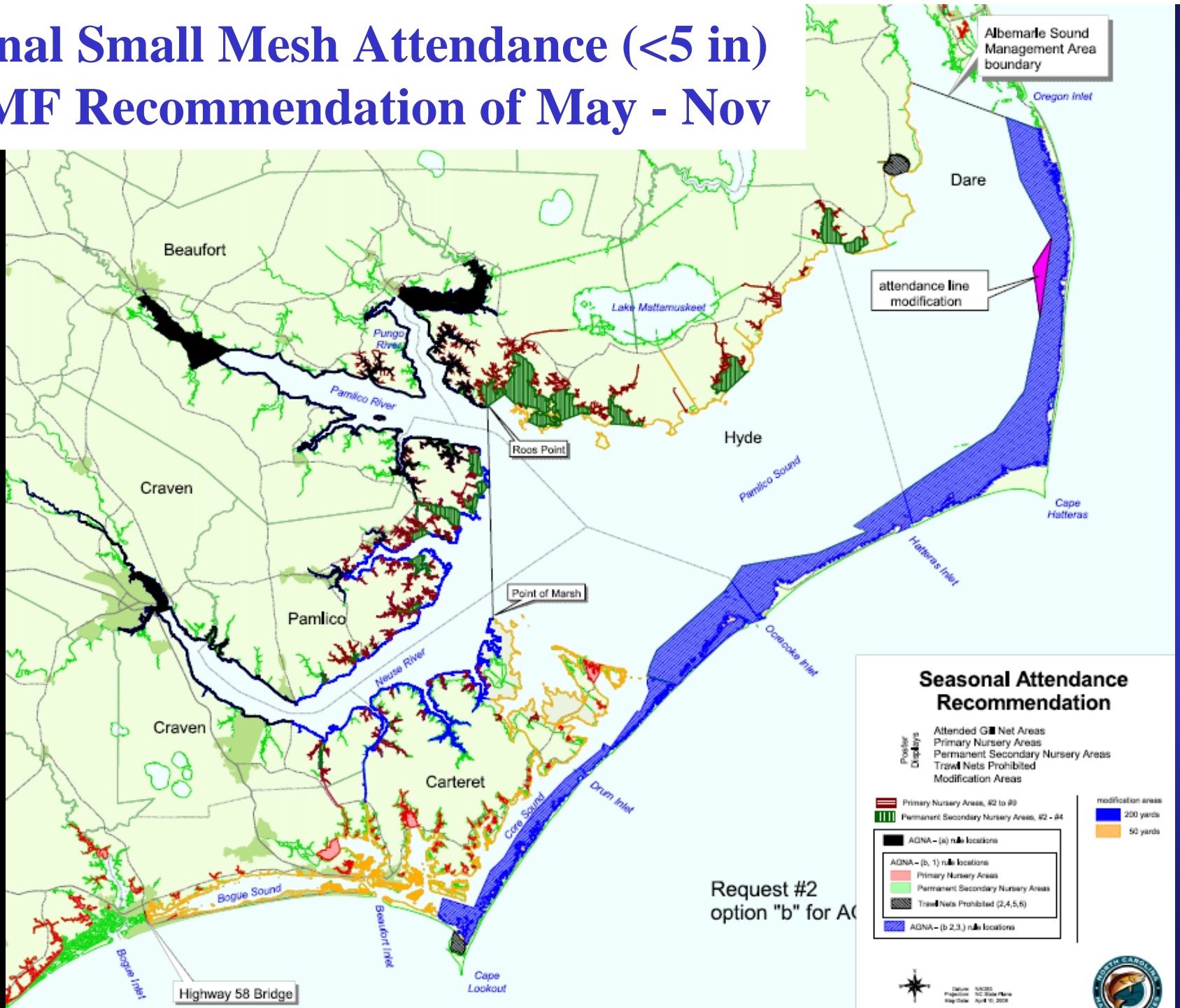
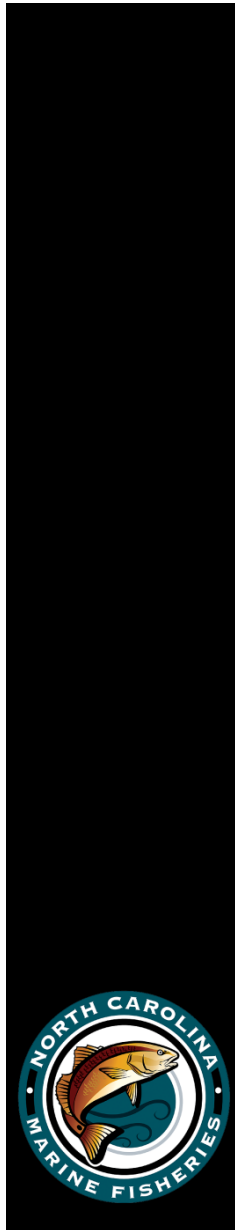
## May 1 – August 31



# Seasonal Small Mesh Attendance (<5 in) For the month of October



# Seasonal Small Mesh Attendance (<5 in) NCDMF Recommendation of May - Nov



# Other Small Mesh Issues

Additional Issue – Modification to attendance line along ‘Outer Banks’ as recommended from NEAC based on public comment.

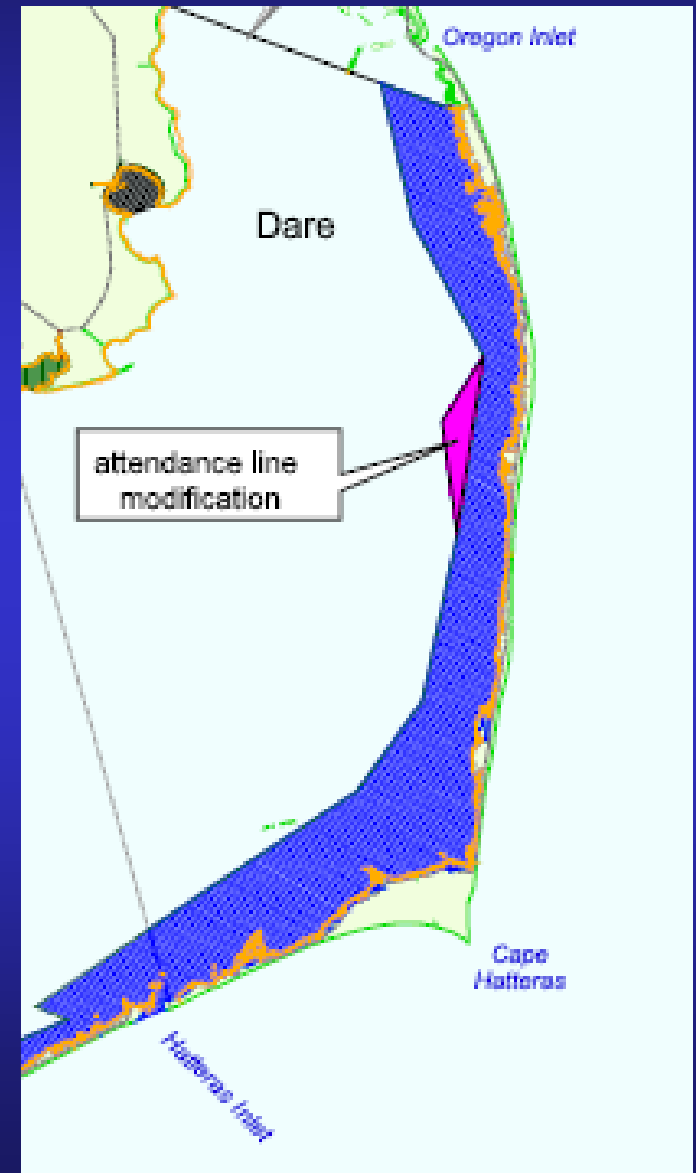
DMF and RDAC Recommendation: Modify current attendance line between Rodanthe and Gull Island striking the point along the attendance line at the location described as ‘west of Salvo’ and located at 35° 32.6000' N - 75° 31.8500' W

DMF also pursuing changes to small mesh attendance areas that have resulted from the PSGNRA. Will consult with NMFS to allow unattended small mesh nets in deep water areas along ‘Outer Banks’

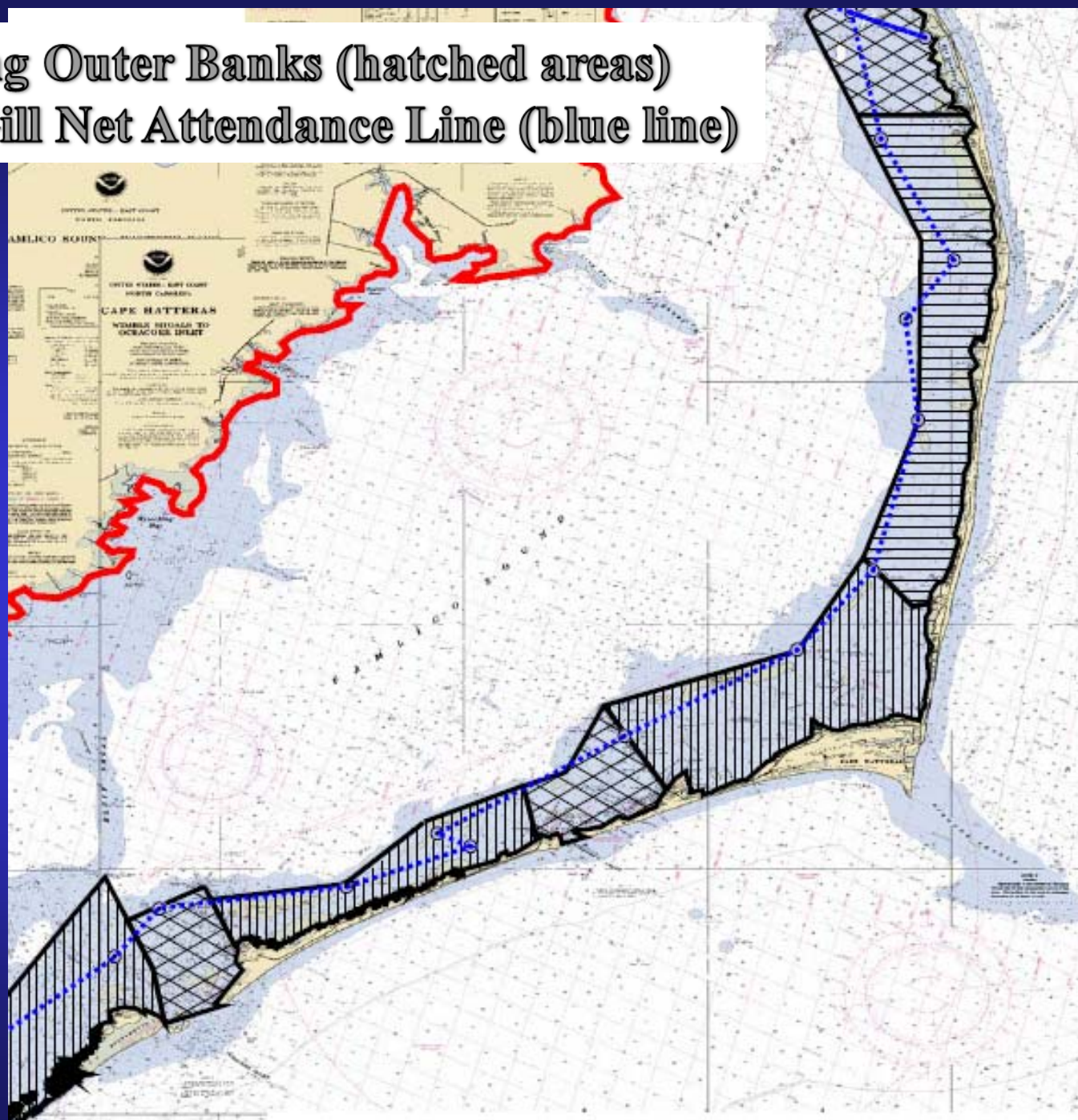


# Modifications to line near Rodanthe

- Allows fishing in deeper water to west – still protects shallow areas to east
- Straightens out line – easier to enforce and comply



PSGNRA along Outer Banks (hatched areas)  
Small Mesh Gill Net Attendance Line (blue line)



# Large Mesh Gill Net ( $\geq 5$ in)

Recommendations:

Status quo (Central AC)

Large mesh gill nets, statewide, must be set parallel to shore and must be at least 10 ft off shore with neither end of the net touching the shore (Finfish AC)

NEAC -supported above with condition that parallel only apply to nets set in first 25 yards of shore

SEAC supported above with exemption south of HWY 58 bridge



## Large Mesh Gill Net ( $\geq 5$ in)

Require all unattended large mesh gill nets to be set a minimum of 10 feet from any shoreline from June-October (NCDMF)

RDAC supports above but recommends it be effective year-round

- Inland AC Recommendation: Require all unattended large mesh gill nets to be set a minimum of 25 yards from any shoreline from June-October.



# MFC Preferred Options Needed For:

1. Adult Harvest
2. Recreational targeting of adult red drum
3. Recreational size and bag limit
4. Commercial Harvest
  - a) Daily Trip Limits
  - b) Bycatch provision
  - c) Commercial Cap
5. Red Drum Discard Bycatch in the Estuarine Gill Net Fishery
  - a) Small mesh attendance
  - b) Modifications to attendance line
  - c) Large Mesh gill nets

